

Asylum Seeking Communities in the North East of England

Quarterly Statistics as at March 2004



This publication includes data for the 1st Quarter (Q1) of 2004, relating to January to March 2004.

It includes the most recently available information from regional, national and some European and worldwide statistics on the number of asylum seekers and their circumstances. Please note that not all the information relates to the same period largely due to the different publication dates of some source material.

Further Information

Enquiries about this bulletin should be addressed to:
North of England Refugee Service and NECASS (NECARS), 2 Jesmond Road West,
Newcastle upon Tyne, NE2 4PQ

Telephone: 0191-2457311 Ext: 208
0191-2116711

Contents:

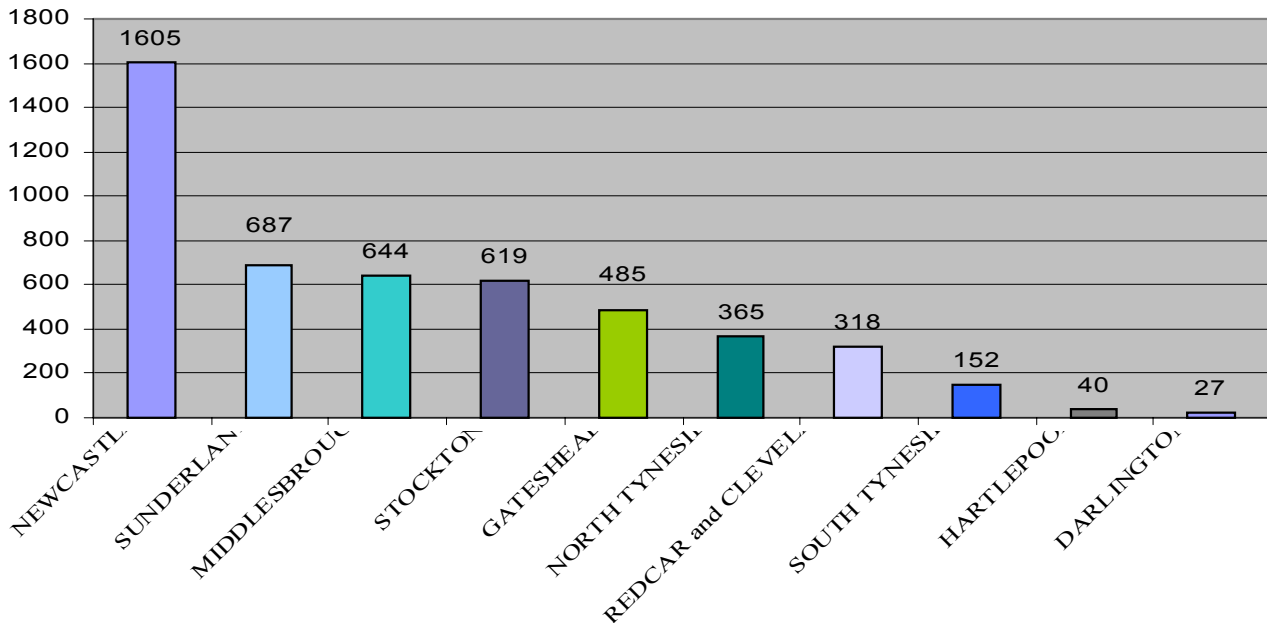
I)	Summary	
	1) Summary.....	3
II)	Supported Asylum Seekers in the Region	
	1) Asylum seekers supported by the local authorities.....	4
	2) Subsistence only supported asylum seekers.....	4
	3) Number of households in the North East by provider and region.....	5
III)	Nationality of Supported Asylum seekers in Region	
	1) Top ten Nationalities in the North East.....	6
IV)	Supported Asylum Seekers by Region	
	1) Asylum seekers in different regions of the UK.....	7
	2) Subsistence only supported asylum seekers in different regions of the UK.....	7
V)	Asylum Applications - National	
	1) Number of applications for the past 9 quarters.....	8
	2) The top ten nationalities applying for asylum in quarter 3 of 2003.....	8
VI)	NASS Applications – National	
	1) Number of NASS applications made in the past 6 quarters.....	9
	2) Top ten nationalities applying for NASS support.....	9
VII)	Asylum Application Initial decisions – National	
	1) Number of decisions made for the past 5 quarters.....	10
	2) Number of decisions made for the past 9 quarters.....	10
	3) Appeals determined per year.....	10
VIII)	Asylum Appeals – National	
	1) Appeals received.....	11
	2) Appeals determined.....	11
	3) Timeliness of Appeal decisions.....	11
IX)	Applications to European Countries	
	1) Number of applications made to European countries.....	12
	2) Asylum applications to European countries per 1,000 population.....	12
X)	Asylum Seekers and Refugees Worldwide	
	1) Countries of origin of Refugee Arrivals.....	13
	2) The major Refugee hosting countries.....	13

Summary

1. As at March 2004 there were 4942 asylum seekers in the North East, a slight decrease (1%) from December 2003. The majority, 1605 (32.5%), are living in Newcastle upon Tyne [Page 4 and 5]
2. The main nationalities of asylum seekers in the North East are Iranian (11.3%), Iraqi (10.4%) and Afghan (6.2%). [Page 6]
3. The total number of asylum seekers in the UK who are supported by NASS (The National Asylum Support Service) is 76,245, a decrease of 5% from the previous quarter. Greater London has the largest number with 22,905 followed by Yorkshire and the Humber with 10,710. [Page 7]
4. Asylum applications in the quarter nationally have reached 8,940, a decrease of 17% from the previous quarter. The main countries of origin were Somalia (11.2%), Iran (8.1%) and the People's Republic of China (6.9%). [Page 8]
5. The number applying for NASS support nationally was 7,425, an increase of 6% from the previous quarter. The main countries of origins were Iraq (11.9%), Iran (11.2%) and Somalia (9.2%). [Page 9]
6. A Total of 14,620 asylum applications received initial decisions, 2% lower than the previous quarter. Hence the number awaiting a decision fell to 18,100. 80% had initial decisions served within 2 months compared with 80% (the same) in the previous quarter. [Page 10]
7. 10,100 appeals were received and 18,225 were determined, 11% lower and 10% lower than in the previous quarter respectively. The number of appeals determined by IAA adjudicators was 79,385 in 2003/04, 12% more than 2002/03 (70,990) [Page 11].
8. 346,600 asylum applications were made to European countries (EU + Switzerland and Norway) in 2003, 19% less than in 2002. UK received the largest number in 2002, but France was on top of the list in 2003. [Page 12]
9. Asia had the highest number of asylum seekers and refugees, with 9,378,900. At the start of 2003 Europe came third with 4,403,900. The main country of origin of refugee arrivals in 2002 was Liberia with 105,000. [Page 13]

Supported Asylum Seekers in the Region – including dependants

- In the North East there are 10 different Local Authorities supporting asylum seekers. The Chart below shows individual asylum seekers supported in NASS accommodation by the various Local Authorities.



Subsistence Only (SO) supported Asylum seekers

There are **184** asylum seekers in the **North East** who are not in NASS accommodation and receive only subsistence support from NASS. In total there are 27,635 clients getting only subsistence support throughout the country. The North East had less than 1% of this number. 19,920 (73%) of all asylum seekers in receipt of subsistence only support were located in London.

The table below shows by Local Authorities the number of individual asylum seekers in receipt of subsistence only support from NASS:

Local Authority	Number of SO Individuals
NEWCASTLE	55
MIDDLESBROUGH	48
SUNDERLAND	19
GATESHEAD	18
STOCKTON	15
REDCAR and CLEVELAND	6
NORTH TYNESIDE	5
SOUTH TYNESIDE	4
HARTLEPOOL	2
DARLINGTON	1
OTHERS	11

Number of households in NASS accommodation in the North East

There were **2907** households made up of **4942** individuals in the North East as at the end of March 2004. The table below shows the number of households and individuals in each Local Authority area sub-divided by accommodation provider:

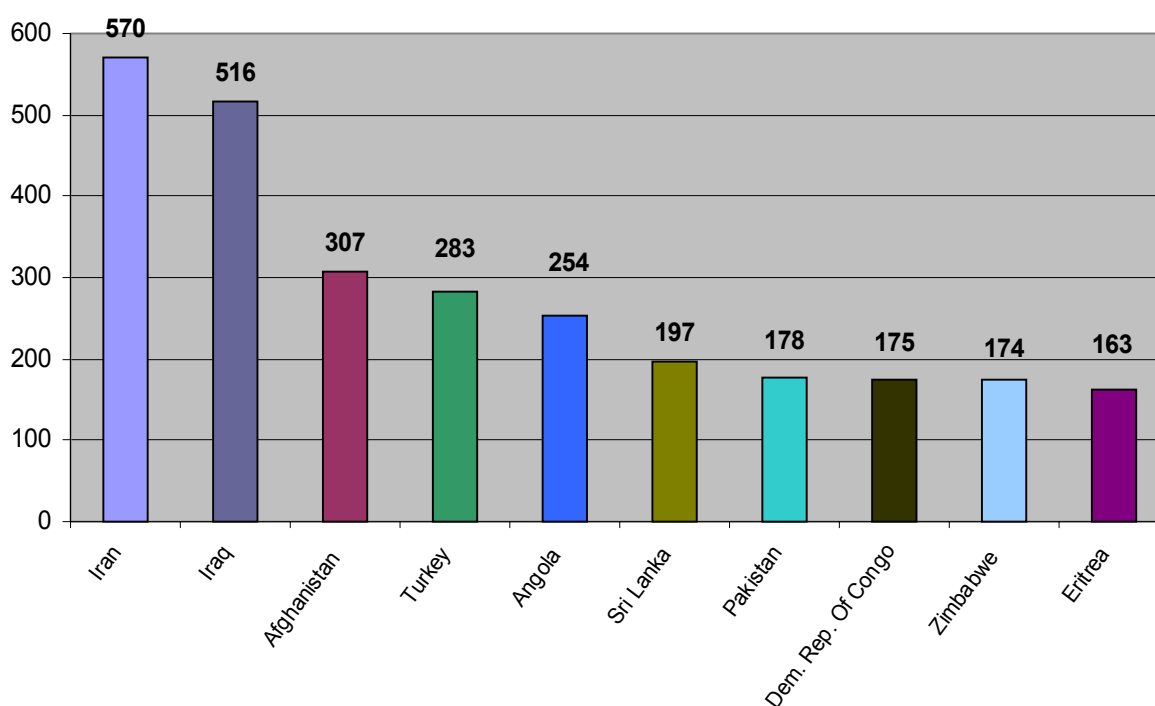
Town	PROVIDER	Number of Households	Number of individuals
DARLINGTON			
	DARLINGTON COUNCIL	14	27
	TOTAL	14	27
GATESHEAD			
	ROSELODGE LIMITED	119	234
	GATESHEAD COUNCIL	117	220
	ANGEL GROUP	13	31
	TOTAL	249	485
HARTLEPOOL			
	HARTLEPOOL COUNCIL	17	40
	TOTAL	17	40
MIDDLESBROUGH			
	LEENA HOMES LTD	243	329
	MIDDLESBROUGH BC	83	212
	ROSELODGE LIMITED	98	103
	TOTAL	424	644
NEWCASTLE			
	NEWCASTLE UPON TYNE CC	333	787
	ROSELODGE LIMITED	343	427
	ANGEL GROUP	236	391
	TOTAL	912	1605
NORTH TYNESIDE			
	NORTH TYNESIDE COUNCIL	133	331
	ROSELODGE LIMITED	21	34
	TOTAL	154	365
REDCAR and CLEVELAND			
	REDCAR AND CLEVELAND COUNCIL	105	318
	TOTAL	105	318
SOUTH TYNESIDE			
	SOUTH TYNESIDE COUNCIL	49	152
	TOTAL	49	152
STOCKTON			
	ROSELODGE LIMITED	337	357
	STOCKTON COUNCIL	74	145
	LEENA HOMES LTD	60	117
	TOTAL	471	619
SUNDERLAND			
	ROSELODGE LIMITED	257	284
	SUNDERLAND COUNCIL	142	279
	ADELPHI HOTELS LIMITED	113	124
	TOTAL	512	687
Grand Total		2907	4942

Nationality of Supported Asylum Seekers in Region – including dependants

The totals below represent the number of asylum seekers currently residing in NASS accommodation or in receipt of subsistence only support.

As at end March 2004:

- There were **101** different Nationalities in the North East
- The top **10** nationalities in the North East region are shown below:



*Please see Appendix 1 for a more detailed break down of all nationalities in the North East

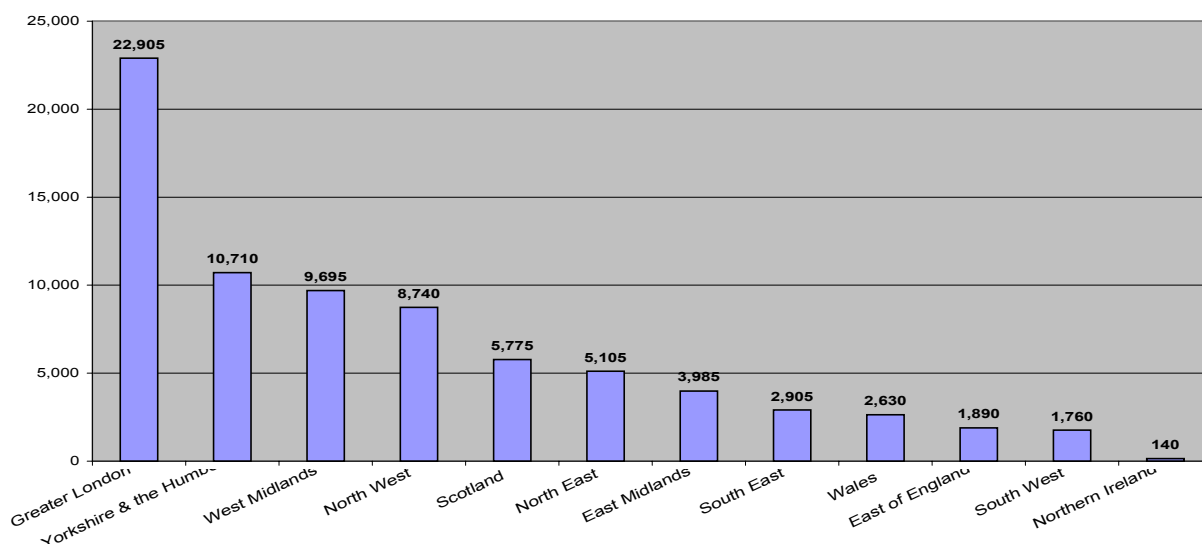
Supported Asylum Seekers by Region – including dependants

The totals below represent the numbers of asylum seekers who are currently in NASS accommodation or are in receipt of subsistence only support. They reflect the numbers of new applicants granted support and exclude applications for those for whom support has ceased. These figures do not include asylum seekers who are not supported by NASS.

As at the end of March 2004:

- 27,635 asylum seekers were receiving subsistence only support
- 48,610 asylum seekers were supported in NASS accommodation
- Thus a total 76,245 asylum seekers were in receipt of NASS support as at the end of Q1 of 2004 which is 5% lower than the previous quarter (Dec-03 = 80,120)

The chart below shows the number of asylum seekers supported by NASS Subsistence only, and by accommodation and subsistence, in different regions of the UK as at the end of March 2004.



- ♦ The regions with the highest populations of asylum seekers supported by NASS in order of numbers were: Greater London (30%), Yorkshire and the Humber (14%), West Midlands (13%), North West (11%), Scotland (8%), the **North East** is in sixth place with 7% of all the asylum seekers supported by NASS in the UK.
- ♦ Below is a table showing the number of asylum seekers in receipt of subsistence only support and clients in NASS accommodation by region:

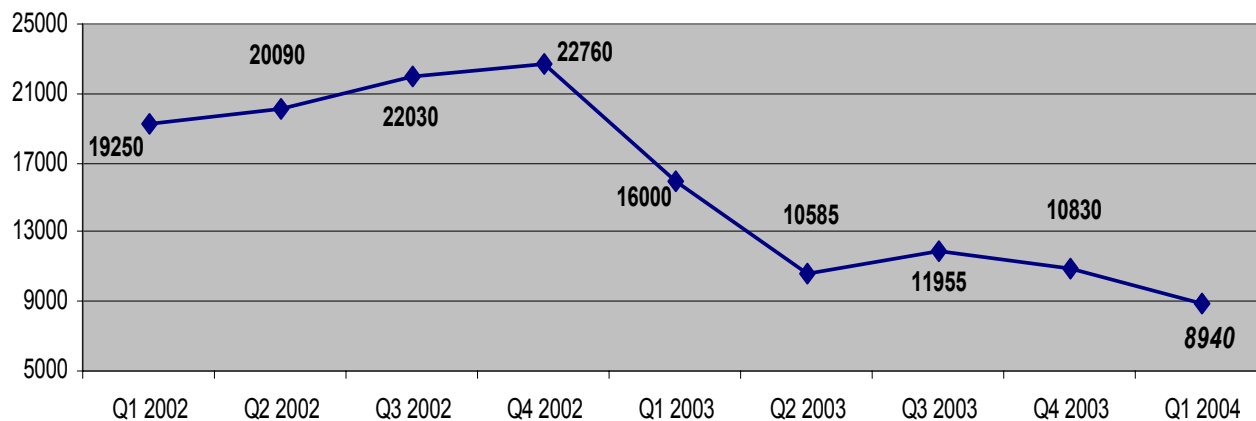
Government Office Region (GOR)	In receipt of Subsistence only support	Supported in NASS accommodation
Greater London	19,920	2,985
Yorkshire & the Humber	835	9,875
West Midlands	1,240	8,455
North West	905	7,835
Scotland	235	5,540
North East	185	4,920
East Midlands	910	3,075
South East	1,735	1,170
Wales	140	2,490
East of England	1,110	780
South West	400	1,360
Northern Ireland	15	125

Asylum applications - National

- **Applications: 8,940, 17% lower than previous quarter**

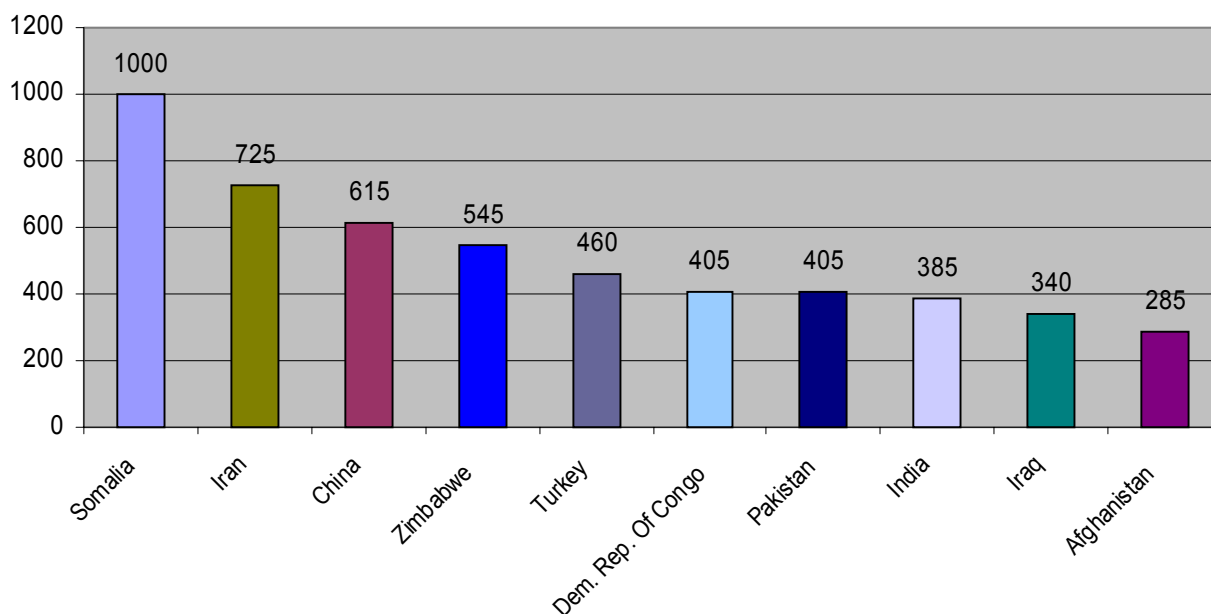
Applications for asylum (excluding dependants) in the UK in Q1 of 2004 totalled 8,940, 17% less than Q4 (10,830).

The Chart below shows the number of applications for the past 9 quarters:



- **Nationalities**

The largest nationality applying for asylum in Q1 of 2004 was Somali with 1,000. Below shows the top 10 nationalities applying for asylum in the UK in Q1:

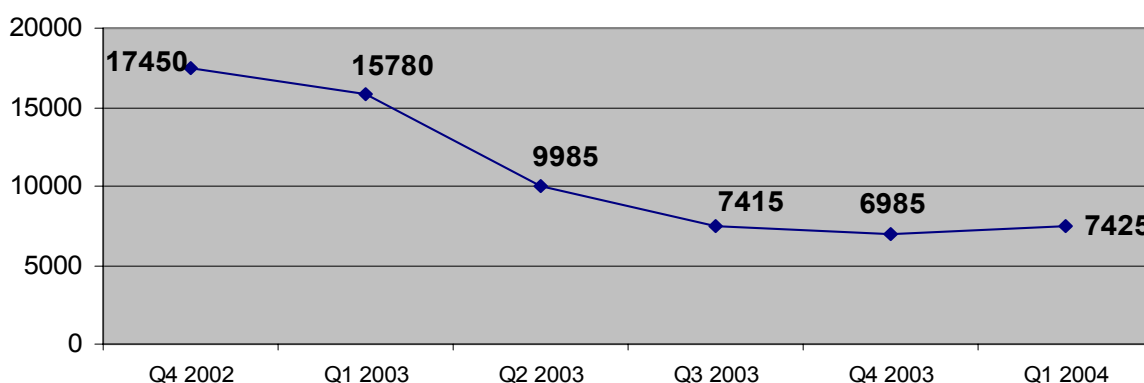


NASS applications - National

- **Total applications: 7,425 which was 6% higher than previous quarter**

The number of applications for NASS support in Q1 was 7,425 which was 6% higher than Q4 (6,985). Separately, 890 asylum cases were notified that they were not eligible to apply for NASS support under Section 55 of the Nationality, Immigration and Asylum (NIA) Act 2002 compared with 1,925 in Q4.

In Q1 6,120 (82%) applications were from single adults and 1,305 (18%) were from family groups.



- **Support type:**

- In Q1, **3,825 (52%)** applications were for accommodation and subsistence support and **2,180 (29%)** of applications were for subsistence only support.
- The remaining 19% of applications were classified as invalid.

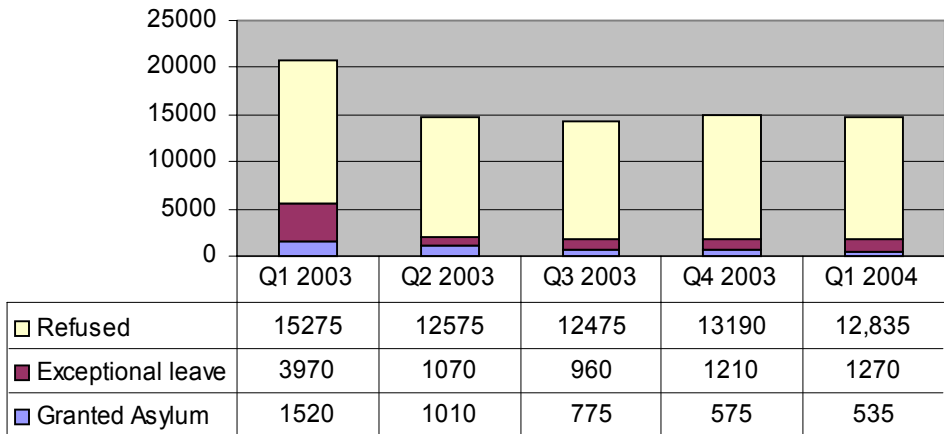
- **Top Ten Nationalities applying for NASS support:**

Iraq	885
Iran	835
Somalia	680
Turkey	490
Dem. Rep. Of Congo	330
Pakistan	315
Afghanistan	310
Zimbabwe	310
Eritrea	260
India	180

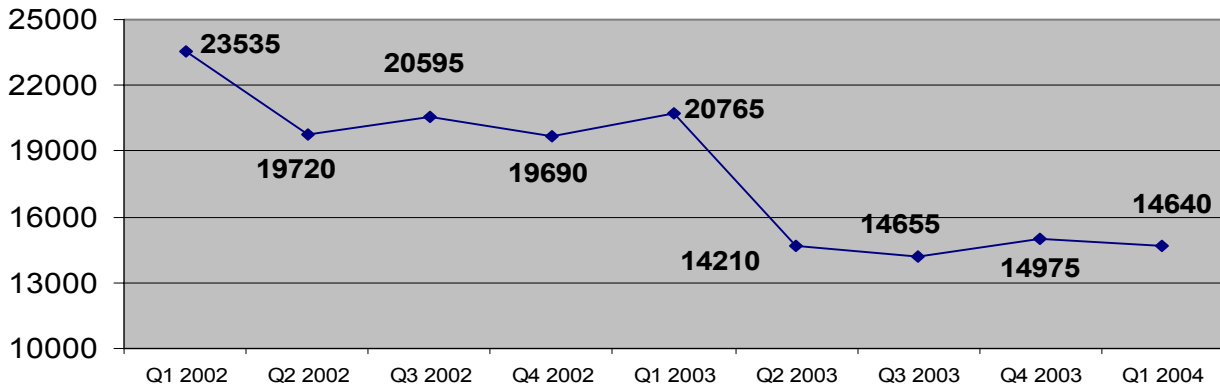
Asylum application initial decisions - National

- **Initial Decisions: 14,640, 2% lower than previous quarter**
 - 14,640 initial decisions were made in Q1, 2% lower than in Q4 (14,975) but remaining higher than the level of applications. These decisions related to, respectively, 17,535 and 18,540 asylum seekers (including dependants).
 - Hence the number of cases awaiting an initial decision at the end of March continued to fall to 18,100 (24,500 at the end of December and 36,300 at the end of March 2003). Of this total, 5,000 cases were in progress, i.e. the application had been outstanding for 6 months or less.
 - 4% of initial decisions were granted asylum in Q1, the same as Q4. The proportion granted Humanitarian Protection (HP) or Discretionary Leave (DL) increased slightly this quarter to 9%. 88% of initial decisions were refusals, the same as Q4.

The Chart below demonstrates the number of decisions made for the past 5 quarters:



The Chart below shows the number of Initial decisions made for the period from Q1 of 2002 to Q1 of 2004:



- **Timeliness of Initial Decisions**
 - 80% of applications received in the period April to December 2003 had initial decisions reached and served within two months.

Asylum appeals - National

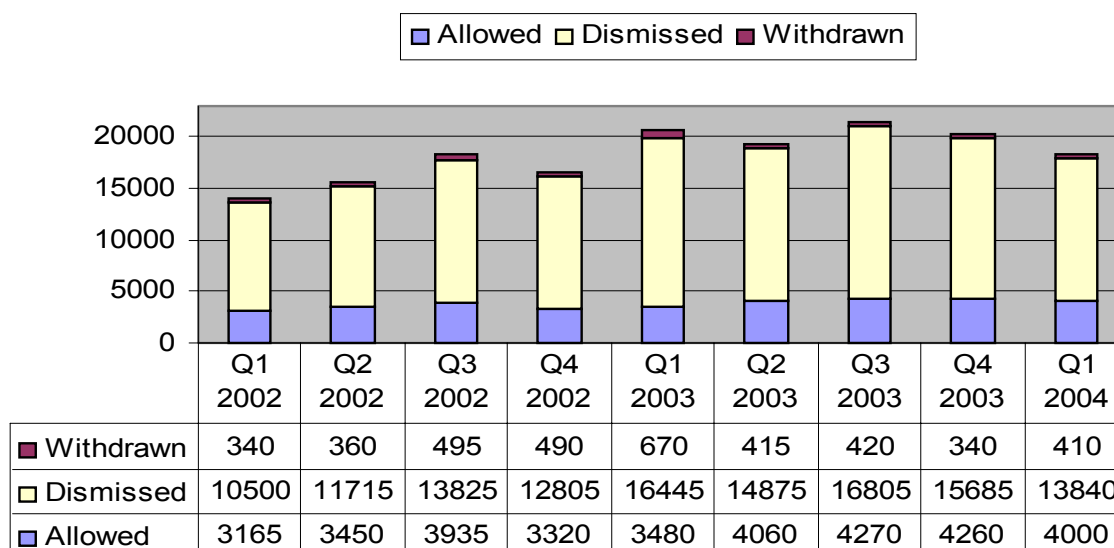
- **Appeals received: 10,100, 11% lower than previous quarter**

- It is estimated that approximately 10,100 appeals were received by the Home Office in Q1 of 2004, compared with 11,300 in Q4 2003.

- **Appeals determined: 18,255, 10% lower than previous quarter**

- The number of appeals determined by adjudicators fell in Q1 by 10% to **18,255** from 20,285 in Q4 and was **11% lower** than in Q1 2003 (20,595).
- The proportion of appeals dismissed fell slightly to 76% in Q1 from 77% in Q4, whilst the proportion of appeals allowed rose slightly to 22%, from 21% in Q4.

The Chart below shows the number of appeals determined by Immigration Appellate Authority (IAA) Adjudicators



- ◆ As at 31 March 2004, there were an estimated 10,000 appeals lodged with the Home Office which had not been sent to the IAA (a proportion of appeals lodged do not result in appeal bundles being sent to the IAA). The total number of asylum appeals in progress in the IAA as at 31 March 2004, was 22,400 (11,000 at the Adjudicator Tier, 5,600 applications for permission to appeal to the Tribunal, and 5,700 Tribunal Appeals).
- ◆ The number of appeals determined by IAA adjudicators was 79,385 in 2003/04, 12% more than 2002/03 (70,990). The proportion of appeals dismissed in 2003/04 was 77%, the same as 2002/03. Allowed appeals increased slightly to 21% from 20% in 2002/03, whilst withdrawn appeals fell slightly to 2%.

Applications to European Countries 2002 and 2003

In Total 346,600 asylum applications were made to European Countries (i.e. EU plus Switzerland and Norway) in 2003. The highest numbers of applications were made in France (20.4%), UK (17.6%) and Germany (14.5%). The table below shows the number of applications made to European Countries in 2002 and 2003[†]

	Number of applicants (Including dependants)		% Change	% of Total
	2002	2003		
Luxemburg	1,000	1,600	60%	0.46%
Greece	5,700	8,200	44%	2.37%
France	58,100	70,700	19%	20.40%
Sweden	33,000	31,400	-5%	9.06%
Spain	6,200	5,700	-8%	1.64%
Norway	17,500	16,000	-9%	4.62%
Finland	3,400	3,100	-9%	0.89%
Belgium	21,400	19,300	-10%	5.57%
Austria	39,400	32,400	-18%	9.35%
Switzerland	26,100	20,800	-20%	6.00%
Denmark	5,900	4,600	-22%	1.33%
Netherlands	18,700	13,400	-28%	3.87%
Germany	71,100	50,400	-29%	14.54%
Ireland	11,600	7,900	-32%	2.28%
UK	103,100	61,100	-41%	17.63%
Portugal	200	100	-50%	0.03%
Italy	7,300	n/a	n/a	n/a
TOTAL EU	429,700	346,600 §	-19% §	100%

- Asylum applications to European Countries, including dependants, per 1,000 population 2002[†]

	Applications in 2003 (Including dependants)	Applications in 2003 per 1,000 of population
Austria	32,400	3.9
Sweden	31,400	3.5
Norway	16,000	3.5
Luxembourg	1,600	3.1
Switzerland	20,800	2.9
Ireland	7,900	2.0
Belgium	19,300	1.9
France	70,700	1.2
UK	61,100	1.0
Denmark	4,600	0.8
Netherlands	13,400	0.8
Greece	8,200	0.7
Germany	50,400	0.6
Finland	3,100	0.6
Spain	5,700	0.1
Portugal	100	0.0
Italy	n/a	n/a
Total EU	346,600	1.0

Source: Home office quarterly reports. All figures are provisional and subject to change

[†] Figures rounded to the nearest 100

§ Excludes Italy

Asylum seekers and refugees worldwide

There were **10,389,700** refugees and **1,014,400** asylum seekers around the world as at the 1st of January 2003 on a continent by continent basis. Asia has the highest number of the refugees and asylum seekers in the world.

The global refugee population dropped sharply from **12 million** on the previous year to **10.4 million**, principally because of the return of nearly 2 million Afghans from neighbouring Pakistan and Iran.

There were **293,000** new refugees registered in **2002**, a drop of **69%** compared with the previous year. The table below shows the top ten major refugee arrivals during 2002:

Country of Origin	Main Countries of Asylum	Total
Liberia	Sierra Leone / Guinea / Cote d'Ivoire	105,000
D.R. Congo	Burundi / Tanzania / Zambia	39,000
Burundi	Tanzania	29,000
Somalia	Yemen / Kenya	24,000
Cote d'Ivoire	Liberia / Guinea	22,000
Central African Republic	Chad / Congo	20,000
Nigeria	Cameroon	17,000
Sudan	Uganda / Kenya / Central African Rep.	16,000
Angola	Zambia / D.R. Congo	8,000
Rwanda	Uganda / Tanzania	6,000

The table below shows the overall major refugee hosting countries:

Country	Total 1 st January 2003
Iran	1.3 Million
Pakistan	1.2 Million
Germany	980,000
Tanzania	690,000
United States	485,000
Serbia and Montenegro	350,000
Democratic Republic of Congo	330,000
Sudan	330,000
China	300,000
Armenia	250,000
TOTAL	20,556,700

* The figures are provided by UNHCR

Please note that as the UNHCR update their full records on a yearly basis only, in the interim quarter we will use this section to provide a selection of relevant worldwide statistics.