

Asylum statistics for the North East- as at September 2005



This publication includes data for the 3rd Quarter (Q3) of 2005, relating to July to September 2005.

It includes the most recently available information from regional, national and some European statistics on the number of asylum seekers and their circumstances. Please note that not all the information relates to the same period largely due to the different publication dates of the source material.

Further Information

Enquiries about this bulletin should be addressed to: The Statistics Officer,
North of England Refugee Service and NECARS, 2 Jesmond Road West, Newcastle upon Tyne,
NE2 4PQ
Telephone: 0191-2457311 Ext: 208
0191-2116711

I. Summary	
i. Summary.....	3
II.Supported Asylum Seekers in the Region	
i. Asylum seekers supported by the local authorities.....	4
ii. Subsistence only (SO) supported asylum seekers.....	4
iii. Number of households in the North East by provider and region.....	5
III.Nationality of Supported Asylum seekers in Region	
a. Top ten Nationalities in the North East.....	6
IV.Supported Asylum Seekers by Region – Including dependants	
a. Asylum seekers in different regions of the UK.....	7
b. Subsistence only supported asylum seekers in different regions of the UK.....	7
V.Asylum Applications - National	
a. Number of applications for the past 9 quarters.....	8
b. The top ten nationalities applying for asylum in quarter 3 of 2005.....	8
VI.NASS Applications – National	
a. Number of NASS applications made in the past 6 quarters.....	9
b. Top ten nationalities applying for NASS support.....	9
VII.Asylum Application Initial decisions – National	
a. Number of decisions made for the past 5 quarters.....	10
b. Number of decisions made for the past 9 quarters.....	10
c. Timeliness of Initial decisions	10
VIII.Applications and support under section 4 of the Immigration and Asylum Act 1999 (Hard Case)	
a. Section 4 support description.....	11
b. Successful applications for Section 4.....	11
c. Top 10 nationalities successful application Q3 2005.....	11
IX.Asylum Appeals – National	
a. Appeals received.....	12
b. Appeals determined.....	12
c. Appeals determined by Immigration (IAA)	12
d. Timeliness of Appeal decisions.....	12
X.Applications to European/Non European Countries	
a. Applications to European Countries/ Non European Countries 2003,2004 and Jan – June 2005.....	13
XI. Acknowledgements.....	14

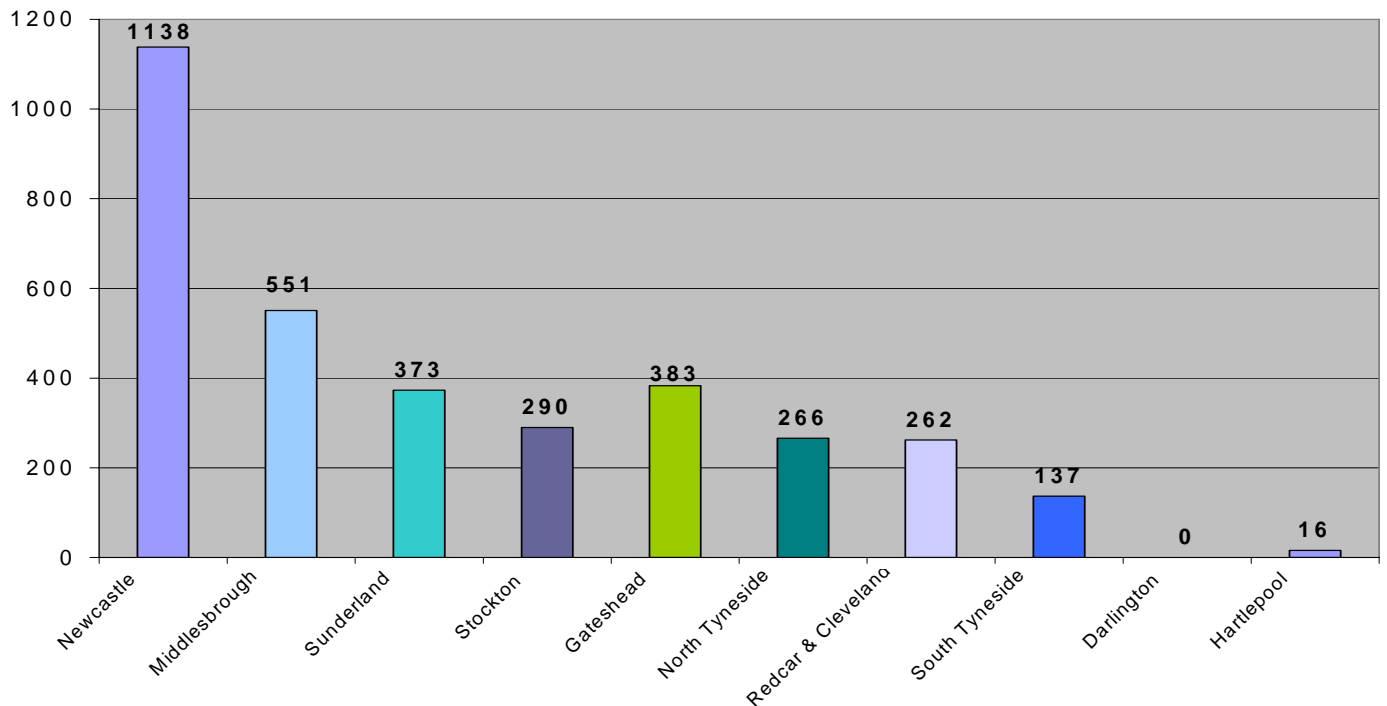
Summary

1. As at September 2005 there were 3,445 asylum seekers in the North East in NASS accommodation, a decrease of (4.83%) from June 2005. The majority, 1,138 (33%), are living in Newcastle [Page 4 and 5]
2. The main nationalities of asylum seekers in the North East are Iranian (12.3%), Angolan (7.6%) and Turkish (7.4%). [Page 6]
3. The total number of asylum seekers in the UK who are supported by NASS (The National Asylum Support Service) is 52,495, a decrease of 2.7% from the previous quarter. Greater London has the largest number with 12,480 followed by Yorkshire and Humberside 8,130. [Page 7]
4. 6,315 Asylum applications in the quarter nationally 11% higher than previous quarter, (6,220) The main countries of origin were Iran (11.87%), then Eritrea (9.9%) and China (7.2%). [Page 8]
5. The number applying for NASS support nationally was 6,850 a decrease of 0.65% from the previous quarter. The main nationalities applying for NASS support were Iran (13.9%), Eritrea (8.6%) and Iraq (7.2%). [Page 9]
6. A Total of 6,515 asylum applications received initial decisions, 10.6% lower than the previous quarter. The number awaiting a decision fell to 6,100. 7% of initial decisions were granted asylum in Q3. [Page 10]
7. Successful applications for Section 4 ('Hard Case') in Q3: 1,510, 14% lower than previous quarter – mostly from Iraqis. [Page 11]
8. 5,455 appeals were received, 13% lower than previous quarter and 7,290 were determined, 28% lower than in the previous quarter. [Page 12].
9. 105,900 applications received in countries in the EU15, 117,600 received in EU25 countries, Total for Europe was 124,600, the grand total of Applications was 169,200 (Jan-Jun 2005) [Page 13]

Supported Asylum Seekers in the Region – including dependants

Asylum seekers supported by the local authorities

- In the North East there are 10 different Local Authorities where the majority of asylum seekers are accommodated. The Chart below shows individual asylum seekers supported in NASS accommodation.



Note: Darlington Figures unavailable

Subsistence Only (SO) supported Asylum seekers

There are **59** asylum seekers in the **North East** who are not in NASS accommodation and receive only subsistence (cash) support from NASS. In total there are **16,210** clients getting only subsistence support throughout the country. The North East had **0.36%** of this number. **11,360 (70%)** of all asylum seekers in receipt of subsistence only support was located in London.

The table below shows by Local Authorities the number of individual asylum seekers in receipt of subsistence only support from NASS:

Local Authority	Number of SO Individuals
NEWCASTLE UPON TYNE	22
SUNDERLAND	15
MIDDLESBROUGH	13
GATESHEAD	5
STOCKTON	3
NORTH TYNESIDE	1
TOTAL	59

Number of households in NASS accommodation in the North East

There were **1613** households made up of **3445** individuals in the North East as at the end of September 2005. The table below shows the number of households and individuals in each Local Authority area sub-divided by accommodation provider:

Town	PROVIDER	Number of Households	Number of individuals
DARLINGTON			
<i>*Based on Home Office figures.</i>			
	NECARS	15	30
	Totals	15	30
GATESHEAD			
	Angel Group	60	161
	NECARS	97	213
	Leena Homes Ltd	1	6
	Clearsprings Management Ltd	1	3
	Totals	159	383
HARTLEPOOL			
	NECARS	7	15
	Newcastle City Asylum Team	1	1
	Totals	8	16
MIDDLESBROUGH			
	Leena Homes Ltd	196	350
	NECARS	76	207
	Redcar & Cleveland AST	1	2
	Totals	273	559
NEWCASTLE			
	NECARS	295	719
	Angel Group	235	411
	Newcastle City Asylum Team	2	4
	Totals	532	1134
NORTH TYNESIDE			
	NECARS	103	269
	Totals	103	269
REDCAR and CLEVELAND			
	NECARS	79	254
	Totals	79	254
SOUTH TYNESIDE			
	Angel Group	4	6
	NECARS	43	131
	Totals	47	137
STOCKTON			
	Stockton-on-Tees A.S.T.	1	1
	NECARS	77	151
	Leena Homes Ltd	70	130
	Clearsprings Management Ltd	2	8
	Totals	150	290
SUNDERLAND			
	Adelphi Hotels Ltd	51	61
	Angel Group	3	3
	Clearsprings Management Ltd	87	95
	Leena Homes Ltd	1	7
	NECARS	105	207
	Totals	247	373
Grand Total		1613	3445

**Note: Figures taken from NASS monthly figures as at end of September 2005, excluding Darlington.*

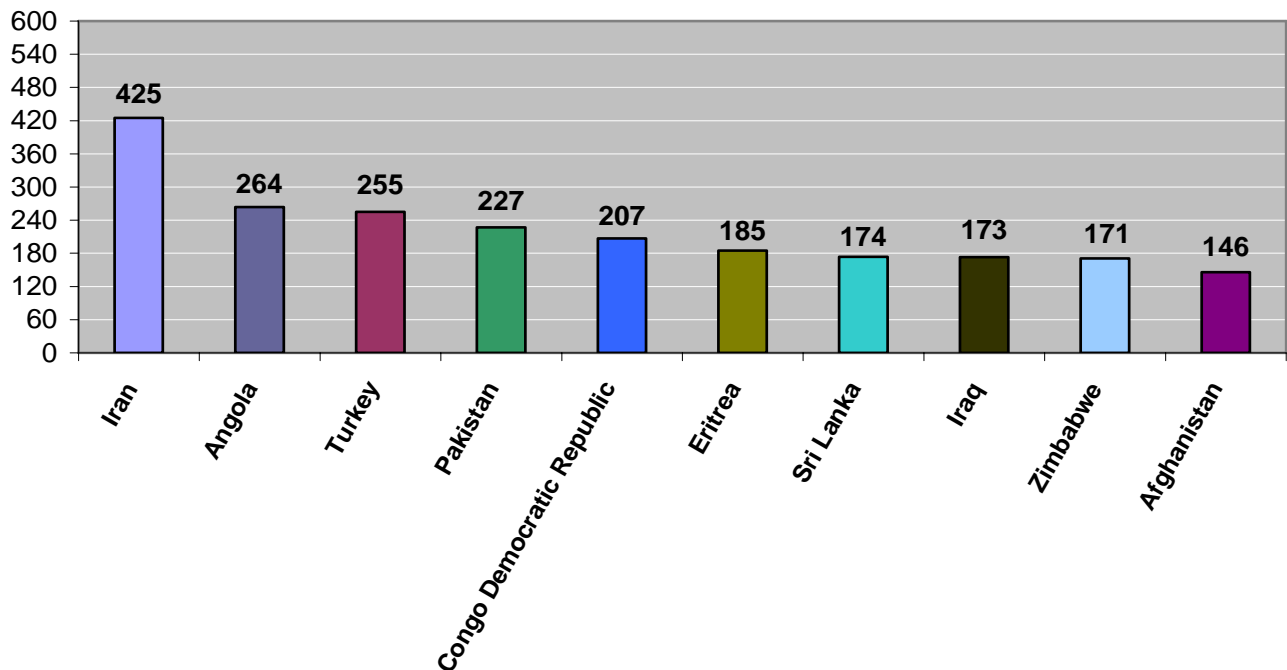
Nationality of Supported Asylum Seekers in Region – including dependants

Top ten Nationalities in the North East

The totals below represent the number of asylum seekers currently residing in NASS accommodation or in receipt of subsistence only support.

As at end September 2005:

- There were **50** different Nationalities in the North East
- The top **10** nationalities in the North East region are shown below:



Supported Asylum Seekers by Region – including dependants

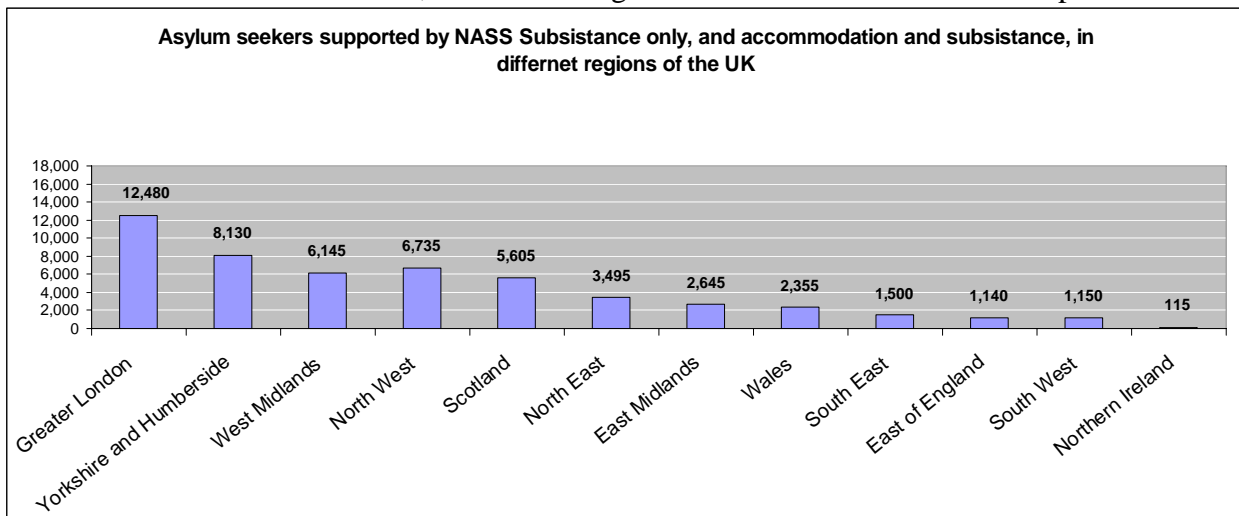
Asylum seekers in different regions of the UK

The totals below represent the numbers of asylum seekers who are currently in NASS accommodation or are in receipt of subsistence (cash) only support. They reflect the numbers of new applicants granted support and exclude applications for those for whom support has ceased. These figures do not include asylum seekers who are not supported by NASS.

As at the end of September 2005:

- **16,210** asylum seekers were receiving subsistence only support
- **36,285** asylum seekers were supported in NASS accommodation
- Thus a total **52,495** asylum seekers were in receipt of NASS support as at the end of Q3 of 2005 which is **3.7%** lower than the previous quarter (Jun-05 = **54,290**)

The chart below shows the number of asylum seekers supported by NASS Subsistence only, and by accommodation and subsistence, in different regions of the UK as at the end of September 2005.



- ♦ The regions with the highest populations of asylum seekers supported by NASS in order of numbers were: Greater London (24.2%), Yorkshire and Humberside (15.9%), North West (13%), West Midlands (11.9%), Scotland (10.9%), the **North East** is in sixth place with **6.8%** of all the asylum seekers supported by NASS in the UK.
- ♦ Below is a table showing the number of asylum seekers in receipt of subsistence only support and clients in NASS accommodation by region:

Government Office Region (GOR)	In receipt of Subsistence only support	Supported in NASS accommodation
Greater London	11360	1,120
Yorkshire and Humberside	470	7,665
North West	705	6,035
West Midlands	946	5,200
Scotland	155	5,450
North East	70*	3,425
East Midlands	520	2,125
Wales	100	2,255
South East	985	515
South West	245	905
East of England	645	495
Ireland	10	105

* Taken from the Home office report and not NASS monthly figures.

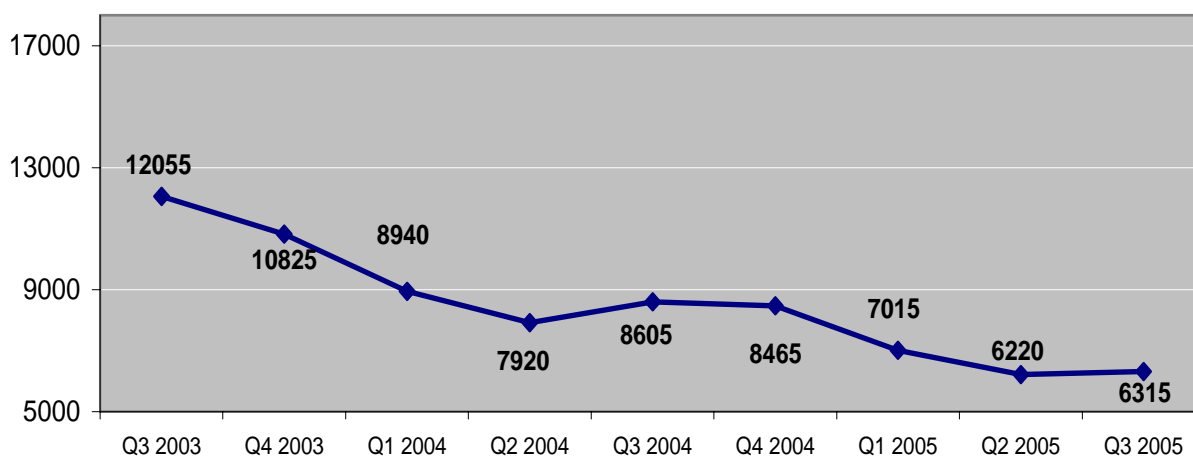
Asylum applications – National

Number of applications for the past 9 quarters

- Applications: 6,315 11% higher than previous quarter

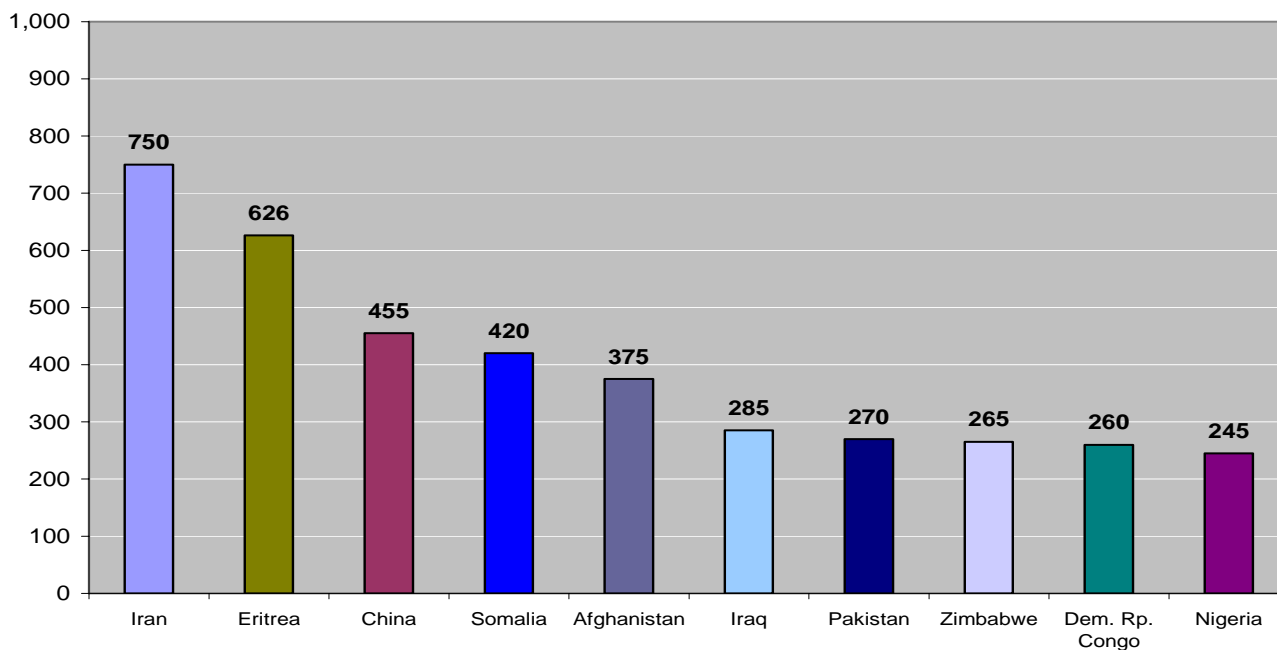
Applications for asylum (excluding dependants) in the UK increased by 2% in Q3 to 6,315, from Q2 (6,220) and was 47.6% less than Q3 2004.

The Chart below shows the number of applications for the past 9 quarters:



The top ten nationalities applying for asylum in Q3 of 2005

The largest nationality applying for asylum in Q3 of 2005 was Iran with 750 applications 4.9% higher than Q2. Below shows the top 10 nationalities applying for asylum in the UK in Q3:



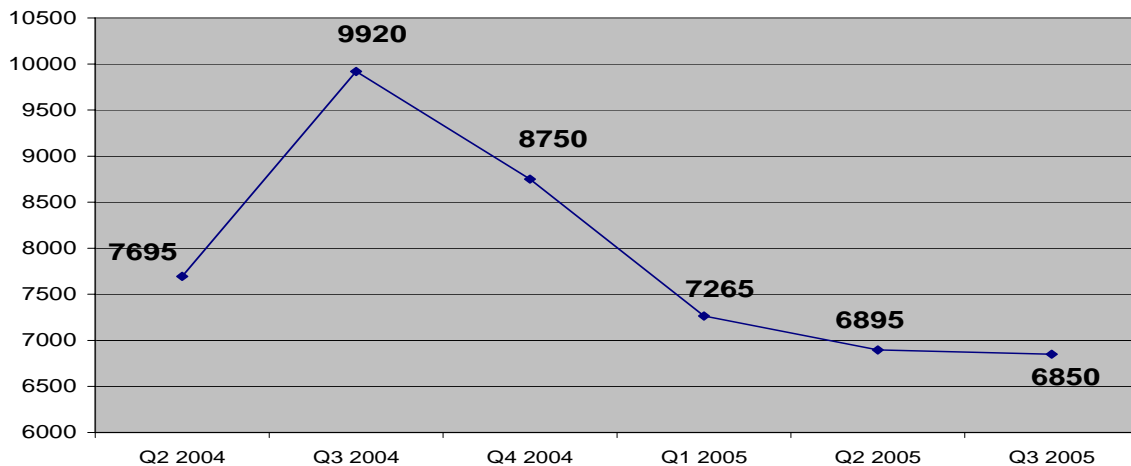
NASS applications - National

Number of NASS applications made in the past 6 quarters

- **Total applications: 6,850 which was 0.65% lower than previous quarter**

The number of applications for NASS support in Q3 was 6,850 0.65% lower than Q2 (6,895) and 31% lower than Q3 2004.

In Q3, 5,500 (80%) applications were from single adults and 1,345 (20%) were from family groups.



- **Support type:**

- In Q3, **4,600 (67%)** applications were for accommodation and subsistence support and **1,870 (27%)** of applications were for subsistence only support.
- The remaining 6% of applications were classified as invalid or unknown.

Top Ten Nationalities applying for NASS support:

Iran	955
Eritrea	590
Iraq	500
Somalia	460
Afghanistan	320
China	300
Sudan	290
Pakistan	275
Serbia & Montenegro	235
Dem. Rep. Congo.	230
Others	2,695
Total	6,850

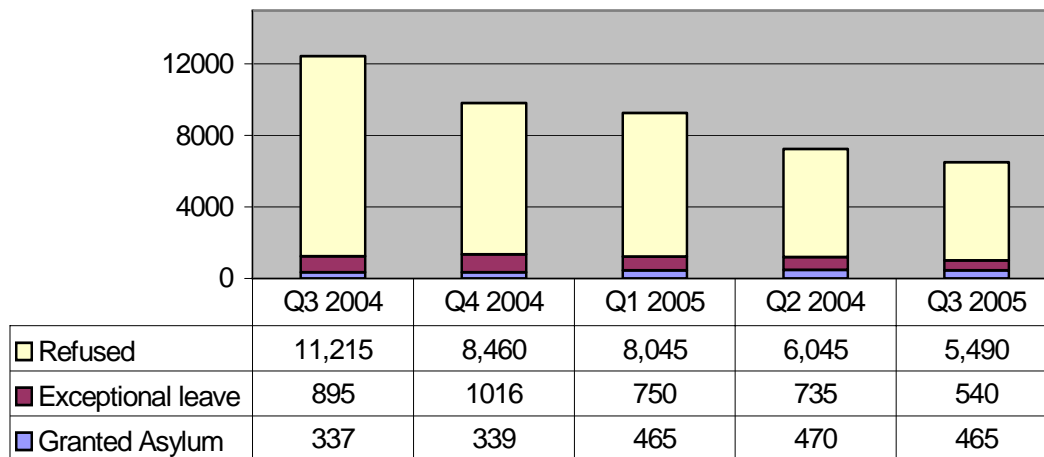
Asylum application initial decisions – National

Number of decisions made for the past 5 quarters

• Initial Decisions in Q3: 6,515, 11% lower than previous quarter

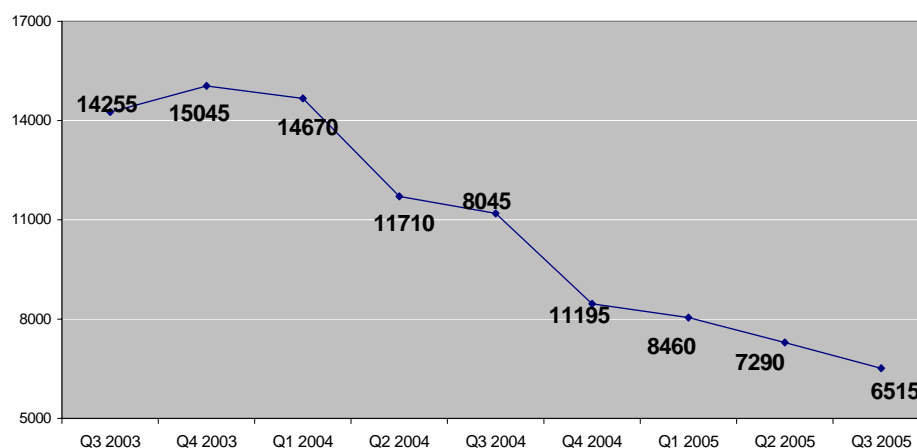
- 6,515 initial decisions were made in Q3, 11% lower than in Q2 (7,290) but higher than the level of applications.
- The number of cases awaiting an initial decision continued to fall, to 6,100 at the end of September 2005 (10,200 at the end of September 2004). Of this total, 4,000 cases were work in progress, i.e. the application had been outstanding for 6 months or less.
- 7% of initial decisions in Q3 granted asylum, more than Q2 (6%). 9% of initial decisions granted humanitarian protection or discretionary leave, lower than Q2 (11%). 84% of initial decisions in Q3 were refusals, slightly lower than Q2 (83%).

The Chart below demonstrates the number of decisions made for the past 5 quarters:



Number of decisions made for the past 9 quarters

The Chart below shows the number of Initial decisions made for the period from Q3 of 2003 to Q3 of 2005:



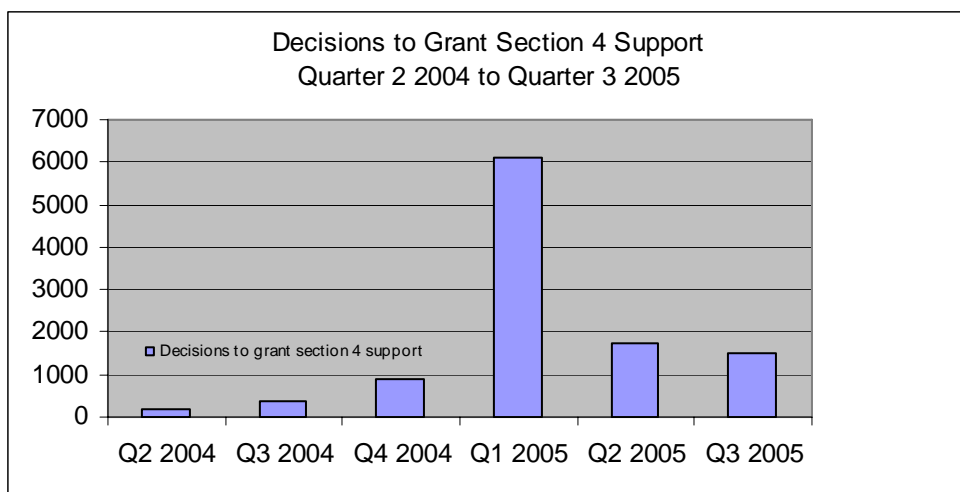
Timeliness of Initial Decisions

- 77% of applications received in Q2 (April to June) 2005 had initial decisions reached and served within two months, the same level as Q1.

Support under section 4 ('Hard Case') of the Immigration and Asylum Act 1999 is provided in the form of accommodation and food, and other basic essential items. Individuals are generally eligible for section 4 support if their asylum application has been finally determined as refused, but they are destitute and there are reasons that temporarily prevent them from leaving the United Kingdom. These reasons are:

- unable to leave UK by reason of a physical impediment to travel or some medical reason; or
- unable to leave UK because there is no current viable route of return to the country of origin; or
- taking reasonable steps to leave the UK or place themselves in a position in which they can leave the UK; or
- permission has been obtained to proceed with a judicial review against a decision relating to the person's asylum claim; or
- the provision of support is otherwise necessary to avoid a breach of the person's human rights.

- The number of successful applications for section 4 support in Q3 2005 was 14% lower than in Q2 2005.



- Iraqi nationals accounted for the highest number (800) of decision to grant support, 53% of all granted cases

- As at the end of Q3 (September) 7,630, excluding dependants, were in receipt of section 4 support, 14% higher than at the end of Q2 (June) (6,715). The increase in numbers supported is less than the numbers granted section 4 support in Q3: this is because not all those are granted section 4 support take up the offer.

Top 10 Nationalities successful applications Q2 2005

Iraq	800
Eritrea	155
Iran	100
Sudan	50
Somalia	45
Congo	40
Afghanistan	35
Dem. Rep. Congo	35
Ethiopia	30
Zimbabwe	25
Others	195
Total	1,510

Asylum appeals - National

On 4 April 2005, the commencement of section 26 of *The Asylum and Immigration (Treatment of Claimants, etc.) Act 2004* introduced the appeals system under the Asylum and Immigration Tribunal (AIT). All outstanding work from the Immigration Appellate Authority has been transferred to an equivalent appeal stage within the AIT, in line with transitional provisions. Data on determinations refer to cases dealt with by Immigration Judges. All appeals figures are provisional and subject to change.

Appeals received

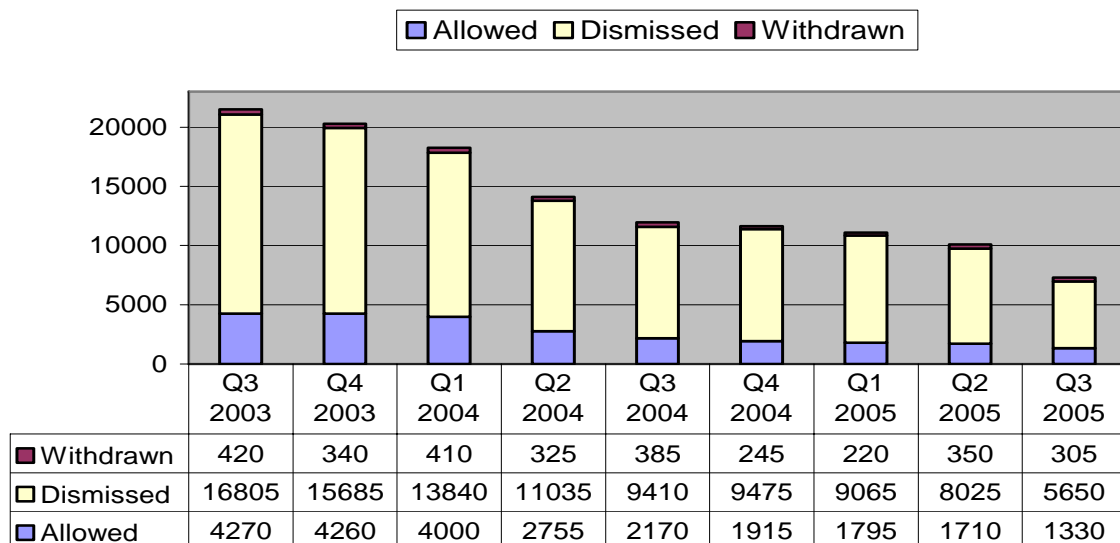
- Appeals received by AIT in Q3: 5,455 13% lower than previous quarter
- 5,455 appeals were received by the AIT in Q3, 13% lower than Q2 (6,305).

Appeals determined

- Appeals determined fell in Q3 by 28% to 7,290 from 10,085 in Q2, and was 39% lower than in Q3 2004 (11,965).
- The proportion of appeals dismissed was 78% in Q3, whilst 18% of appeals allowed.
- The total asylum work in progress at the AIT at 20 September 2005 was 9,000.

Appeals determined by Immigration (IAA/AIT)

The Chart below shows the number of appeals determined by Immigration Appellate Authority (IAA/AIT) Adjudicators



Timeliness of case processing, up to and including appeals at Immigration Appellate Authority and Immigration Appeal Tribunal

- 59% of applications received in April to September 2004 had a final decision, up to and including appeals, within 6 months, compared with 63% for 2003/2004.

Applications to European Countries/ Non European Countries 2003, 2004 and Jan – Jun 2005

10

Applications received for asylum in Europe and elsewhere, including dependants, for 2003, 2004, Jan-Jun 2005

Country	2003	2004	Jan-Jun 2005
Austria	32,400	24,700	9,200
Belgium	19,300	17,500	8,800
Denmark	4,600	3,200	1,300
Finland	3,200	3,900	1,900
France	62,000	65,600	31,800
Germany	50,600	35,600	13,300
Greece	8,200	4,500	5,500
Ireland	7,900	4,800	2,200
Italy	13,500	7,400	n/a
Luxembourg	1,500	1,600	400
Netherlands	13,400	9,800	5,300
Portugal	100	100	*
Spain	5,900	5,600	2,600
Sweden	31,400	23,200	8,000
United Kingdom	60,000	40,600	15,500
Total EU15	313,900	247,900	105,900
Cyprus	4,400	9,900	4,000
Czech Republic	11,400	5,500	1,800
Estonia	*	*	*
Hungary	2,400	1,600	800
Latvia	*	*	*
Lithuania	200	200	100
Malta	600	1,000	500
Poland	6,900	8,100	2,300
Slovakia	10,400	11,400	1,400
Slovenia	1,100	1,300	900
Total EU25	351,300	286,800	117,600
Other Europe			
Norway	15,600	7,900	2,400
Switzerland	21,000	14,200	4,700
Total Europe	387,900	308,900	124,600
Non-Europe			
Australia	4,300	3,300	1,600
Canada	31,900	25,500	17,500
USA	60,700	63,000	25,400
Grand Total	484,800	400,700	169,200

Figures rounded to the nearest 100 with * = between 1 and 49.

Asylum seekers and refugees worldwide

3rd Quarter figures unavailable, to be added on later release.

Acknowledgements

Home Office: Asylum Statistics: 2nd Quarter 2005 United Kingdom -

NECARS internal data supplied to NERS.