

Asylum statistics for the North East- as at September 2007



Produced by the “North of England Refugee Service” (NERS) & the “North East Strategic Migration Partnership” (NESMP).

This publication includes data for the 3rd Quarter (Q3) of 2007, relating to July to September 2007.

It includes the most recently available information from regional, national and some European statistics on the number of asylum seekers and their circumstances. Please note that not all the information relates to the same period largely due to the different publication dates of the source material.

Further Information

Enquiries about this bulletin should be addressed to:
The Information and Statistics Officer,
North of England Refugee Service and NESMP,
2 Jesmond Road West,
Newcastle upon Tyne,
NE2 4PQ
Telephone: 0191-2457311 Ext: 208
0191-2116711

I. Summary	
i. Summary.....	3
II.Supported Asylum Seekers in the Region	
i. Asylum seekers supported by the local authorities.....	4
ii. Subsistence only (SO) supported asylum seekers.....	4
iii. Number of households in the North East by provider and region.....	5
III.Nationality of Supported Asylum seekers in Region	
a. Top ten Nationalities in the North East.....	6
IV.Supported Asylum Seekers by Region – Including dependants	
a. Asylum seekers in different regions of the UK.....	7
b. Subsistence only supported asylum seekers in different regions of the UK.....	8
V.Asylum Applications - National	
a. Number of applications for the past 11 quarters	9
b. The top ten nationalities applying for asylum in quarter 3 of 2007.....	9
VI.NASS Applications – National	
a. Number of NASS applications made in the past 11 quarters.....	10
b. Top ten nationalities applying for NASS support.....	10
VII.Asylum Application Initial decisions – National	
a. Number of decisions made for the past 7 Quarters.....	11
b. Number of decisions made for the past 11 quarters.....	11
c. Timeliness of Initial decisions	11
VIII.Applications and support under section 4 of the Immigration and Asylum Act 1999 (Hard Case)	
a. Section 4 support description.....	12
b. Successful applications for Section 4.....	12
c. Top 10 nationalities successful application Q3 2007.....	12
IX.Asylum Appeals – National	
a. Appeals received.....	13
b. Appeals determined.....	13
c. Appeals determined by Immigration (IAA)	13
d. Timeliness of Appeal decisions.....	13
X.Applications to European/Non European Countries	
a. Applications to European Countries/ Non European Countries 2003, 2004, 2005, 2006, Q1, Q2 & Q3	14
XII. Acknowledgements.....	15

Summary

1. As at the End of September 2007 there were **4242** asylum seekers in the North East receiving either subsistence only support or in NASS accommodation. This is an increase of **244** from the end of June 2007 (**3998**).
2. At the end of **September 2007** there were **4211** asylum seekers in the North East in NASS accommodation, an increase of **249 (+6.28%)** from **June 2007. 1583 (37.59%)**, were living in Newcastle [Page 4 and 5].
3. At the end of **September 2007** there were **31** asylum seekers receiving subsistence only support, a decrease **-13.89%** from **June 2007. 13 (41.93%)**, were living in Newcastle [page 4] NECARS figures).
4. The main nationalities of asylum seekers in the North East are Iranian (11.24), Iraqi (9.81%), Zimbabwean (6.91%). [Page 6] (NECARS figures).
5. The total number of asylum seekers in the UK who are supported by NASS (The National Asylum Support Service) is **48,470**, a decrease of 1% from the previous quarter. Greater London has the largest number with **8,700** followed by Yorkshire and Humberside **7,785** [Page 7&8] (Home Office figures).
6. 5,890 Asylum applications in the quarter nationally (United Kingdom) this was 18.99% higher than the previous quarter, (4,950). The main countries of origin were “Peoples Republic of China” (10.95%), the “Eritrea” (9.42%) and “The Republic of Iraq” (9%) [Page 9]. Applications from the “Islamic Republic of Afghanistan fell from 565 to 475 (15.93%) between Q2 2007 and Quarter 3 2007 in the same period applications from the “Peoples Republic of China rose from 505 to 645 (27.72%). [Page 9] (Home Office figures).
7. The number applying for NASS support nationally was **4,145**, an increase of **+9.08** from the previous quarter. The main nationalities applying for NASS support were Iran (12.67%), Iraq (11.22%), Eritrea (8.68%) and Somalia (9.6%). [Page 10] (Home Office figures).
8. A total of **5,230** asylum applications received initial decisions, -11.88% lower than the previous quarter. The number awaiting a decision was 4,800; it was 4,500 at the End of June 2007 and was 6000 at the end of September 2006. 17% of initial decisions were granted asylum in Q3 2007 [Page 11] (Home Office figures).
9. Successful applications for Section 4 (‘Hard Case’) in Q3 2007 **1,475 ; -9.79%** lower than previous quarter – with the largest group being Iraqis [Page 12] (Home Office figures).
10. **3,720** appeals were received in **Q3 2007**, -2.87% lower than previous quarter (**3,830**) and **5,000** appeals were ongoing, the same as Q2. [Page 13] (Home Office figures).
11. **51,100** applications received in countries in the EU27; in the 3rd Quarter 2007 (July-September). Figures for all countries were not available at time of publication [Page 14] (Home Office figures).

Supported Asylum Seekers in the Region – including dependants

Asylum seekers supported by the local authorities

- In the North East there are 10 different Local Authorities where the majority of asylum seekers are accommodated. The Chart below shows individual asylum seekers supported in NASS accommodation.

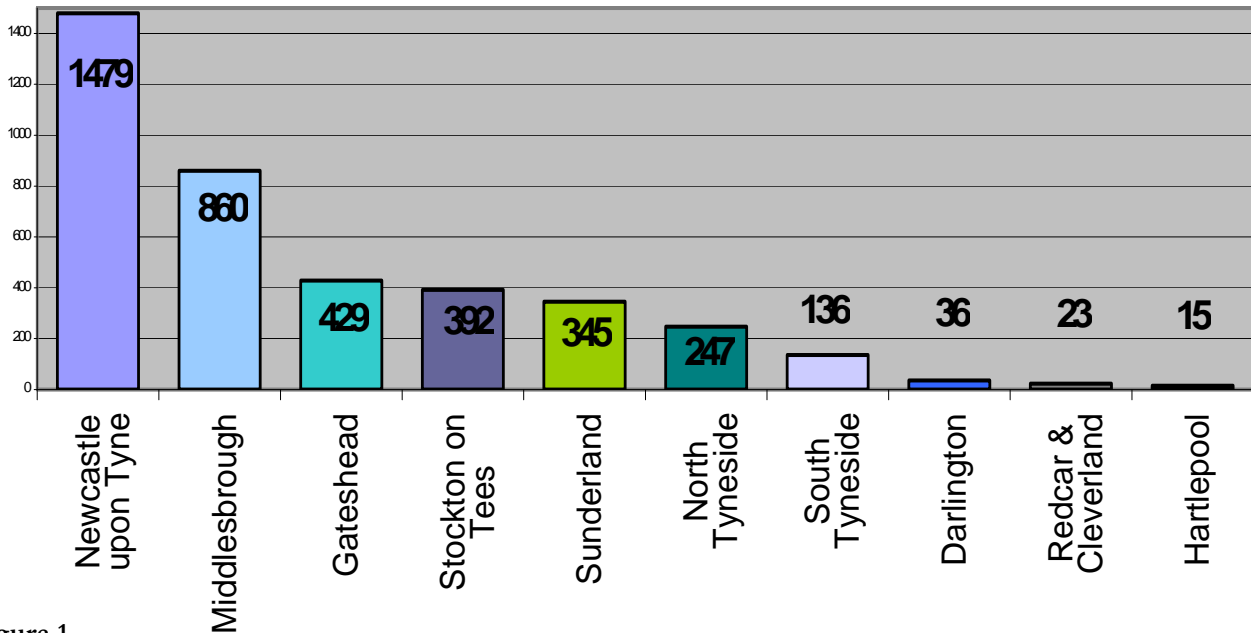


Figure 1

Subsistence Only (SO) supported Asylum seekers

There are **31*** (40 using Home office figures)¹ asylum seekers in the **North East** who are not in NASS accommodation and receive only subsistence (cash) support from NASS. In total there are **10,160** (Home office figures) clients getting only subsistence support throughout the country. The North East had **0.39%** of this number². **7,180 (70.69%)** of all asylum seekers in receipt of subsistence only support were located in London.

The table opposite shows by Local Authorities the number of individual asylum seekers in receipt of subsistence only support from NASS in the North East: This is taken from the figures provided by NESMP and NESPARS.

Figure 2

Local Authority*	Number of SO Individuals
Newcastle upon Tyne	13
Middlesbrough	7
Sunderland	4
Stockton on Tees	2
Gateshead	3
Hartlepool	1
South Tyneside	1
North Tyneside	0
TOTAL	31

Note: *Figures based on NASS data which may differ from Home office provisional figures.

¹ Home office figures are often rounded up to the nearest 5 and small variations may be as a result of data being collected on different days "Asylum Statistics: 3rd Quarter 2007" Table 9.

² This percentage is based on Home office figures, Ibid.

Number of households in NASS accommodation in the North East

There were **2252** households made up of **4211** individuals in the North East at the end of September 2007. This table shows numbers of households & individuals in each Local Authority area sub-divided by accommodation providers:

Town	PROVIDER	Number of Households	Number of individuals
DARLINGTON			
	NESPARS (NECARS) ³	33	53
	Totals	33	53
GATESHEAD			
	Angel Group Housing	79	160
	Kimberley Group Housing	32	47
	NESPARS (NECARS) ³	158	250
	RCA	1	1
	Totals	270	458
HARTLEPOOL			
	Kimberley Group Housing	5	11
	M&Q Properties	3	3
	Totals	8	14
MIDDLESBROUGH			
	Angel Group Housing	106	164
	Kimberley Group Housing	215	417
	M&Q Properties	69	71
	NESPARS (NECARS) ³	76	193
	RCA	4	4
	Totals	470	849
NEWCASTLE upon TYNE			
	Angel Group Housing	267	450
	Kimberley Group Housing	41	72
	M&Q Properties	10	11
	NESPARS (NECARS) ³	487	1047
	RCA	3	3
	Totals	808	1583
NORTH TYNESIDE			
	Angel Group Housing	21	38
	Kimberley Group Housing	100	234
	Totals	121	272
REDCAR and CLEVELAND			
	Kimberley Group Housing	5	18
	Totals	5	18
SOUTH TYNESIDE			
	Angel Group Housing	3	11
	Kimberley Group Housing	3	8
	NESPARS (NECARS) ³	53	150
	Totals	59	169
STOCKTON			
	Angel Group Housing	1	4
	Kimberley Group Housing	167	251
	M&Q Properties	7	7
	NESPARS (NECARS) ³	73	154
	Totals	248	416
SUNDERLAND			
	Kimberley Group Housing	105	147
	M&Q Properties	6	8
	NESPARS (NECARS) ³	118	223
	RCA	1	1
	Totals	230	379
	Grand Total	2252	4211

Figure 3

Note: Figures taken from NASS monthly figures as at the first working day of October 2007 and not Home Office Statistics.

³ NECARS is now known as NESPARS and NESMP split from them in a restructure, however NASS have been still been recording it as NECARS.

Nationality of Supported Asylum Seekers in Region – including dependants

Top ten Nationalities in the North East

The totals below represent the number of asylum seekers residing in NASS accommodation at the end of September 2007⁴ or in receipt of subsistence only support.

As at end September 2007:

- There were 74 different known Nationalities in the North East at the end of September 2007*
- The top 20 nationalities in the North East region at the end of September 2007 are shown below:

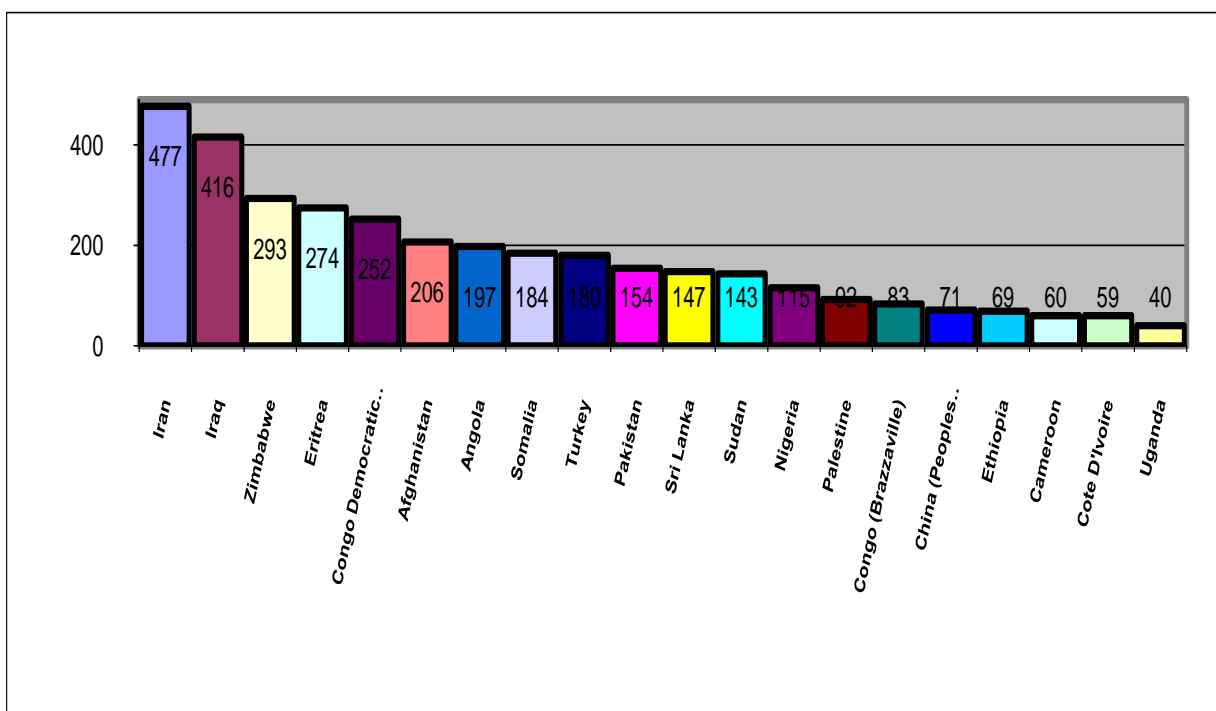


Figure 4

- *14 clients' nationalities are listed as unknown. 2 Client are listed as Stateless under article 1 of the 1954 Convention. These are included in the 74, also included are 35 people from Kosovo (see note below).
- Nationalities are Nationalities of political national entities (countries) recognised by the UK (plus Kosovo which has special UN status, but is still constitutionally a part of Serbia). It does not represent ethnic groups or autonomous/disputed nationalities within recognised political entities (with the exception of Kosovo).

⁴ Data taken on 01nd October 2007.

Supported Asylum Seekers by Region – including dependants

Asylum seekers in different regions of the UK

The totals below represent the numbers of asylum seekers who are currently in NASS accommodation or are in receipt of subsistence (cash) only support. They reflect the numbers of new applicants granted support and exclude applications for those for whom support has ceased. These figures do not include asylum seekers who are not supported by NASS.

As at the end of September 2007:

- **10,160** asylum seekers were receiving subsistence only support.
- **37,060** asylum seekers were supported in NASS accommodation⁵.
- **1,250** asylum seekers were supported in initial accommodation
- Thus a total **48,470** asylum seekers were in receipt of NASS support as at the end of Q3 of 2007 which is **1%** lower than the previous quarter (June-07 = **48,995**).

The chart below shows the number of asylum seekers supported by NASS Subsistence only, and by accommodation and subsistence, in different regions of the UK as at the end of September 2007.

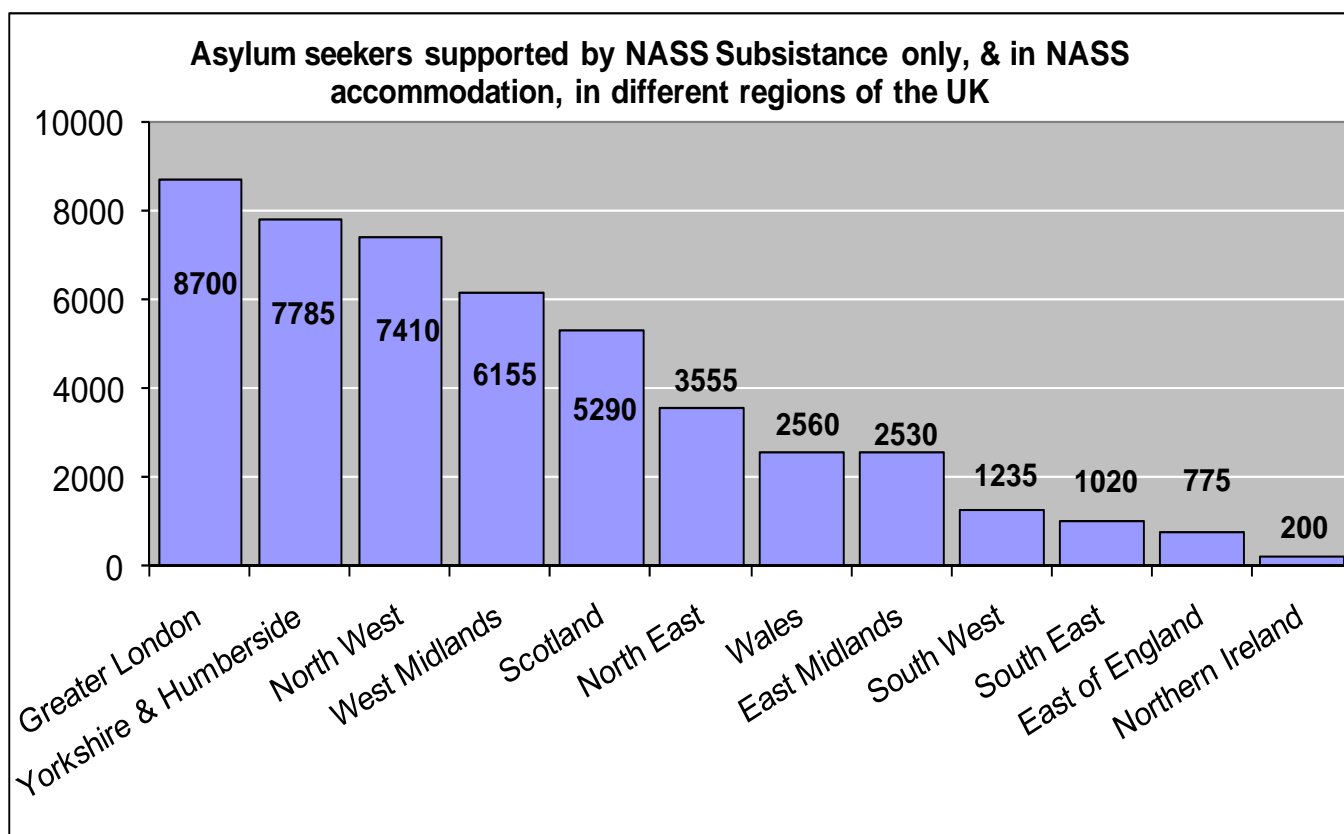


Figure 5

⁵ Due to Home office rounding of figures in the Home Office report there is a published total of 47,220 and the breakdown of those figures in "Figure 6" adding up to 47,215 means there is a discrepancy of 5, this is due to rounding of totals in the Home office published figures.

- ♦ The regions with the highest populations of asylum seekers supported by NASS in order of numbers were: Greater London (18.43%), Yorkshire and Humberside (16.49%), North West (15.69%), West Midlands (13.04%), Scotland (11.2%), the **North East** is in sixth place with **7.53%** of all the asylum seekers supported by NASS in the UK.
- ♦ Below is a table showing the number of asylum seekers in receipt of subsistence only support and clients in NASS accommodation by region:

Government Office Region (GOR)	In receipt of Subsistence only support	Supported in NASS accommodation
Greater London	7,180	1,520
Yorkshire and Humberside	305	7,480
North West	575	6,835
West Midlands	490	5,665
Scotland	170	5,120
North East*	40	3,515
Wales	60	2,500
East Midlands	335	2,195
South West	110	1,125
South East	530	490
East of England	355	420
Northern Ireland	5	195

Figure 6

- *Taken from the Home office report and not NASS monthly figures.

(The 696 discrepancy between those supported in NASS accommodation in the North East provided by NASS earlier in this report and the Home office figures in Figure 6 is in part due to the Home office rounding of figures, and in part due to the different days the “snapshots” of those in accommodation. The different dates and rounding of figures also explains the discrepancy of 9 from the Home Office figure 40, and NASS figure 31).

Asylum applications – National

Number of applications for the past 11 quarters

- **Applications: 5,890 this is 18.99% higher than previous quarter**

Applications for asylum (excluding dependants) in the UK increased by 18.99% in Q3 2007 to 5,890 from in Q2 2007 (4,950) and is **+0.51%** more than Q3 2006 (5,860).

Including dependants the number of applications to the UK increased by **+19.76%** in Q3 2007 (7,090) from Q2 2007 (5,920)

The Chart below shows the number of applications by primary applicants not including dependants for the past 11 quarters (since Q1 2005):

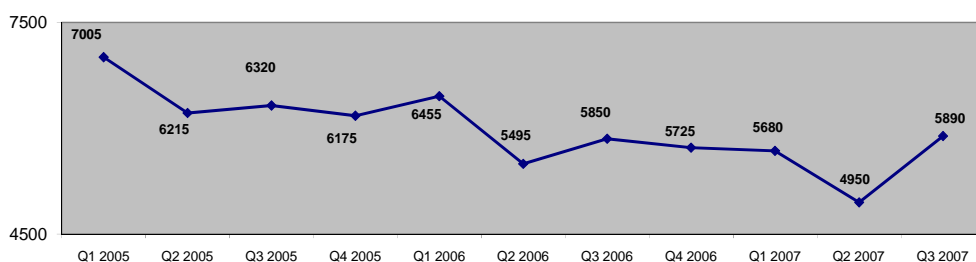


Figure 7⁶

The top ten nationalities applying for asylum in Q3 of 2007

The largest nationality applying for asylum in Q3 of 2007 was the Peoples Republic of China with 645 applications up 27.72% on last quarter with 505. Last quarters previous main place of origin for those applying for asylum of Afghanistan was down 15.93% from 565. Below shows the top 10 nationalities applying for asylum in the UK in Q3 2007:

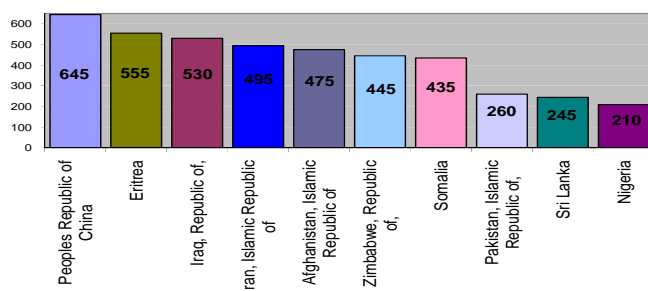


Figure 8

⁶ Any Modifications in figure 7 on the figures previously published in the earlier reports is due to later home office revisions.

NASS applications - National

Number of NASS applications made in the past 11 quarters

- **Total applications: 4,145 in Q3 2007 which was +9.08% higher than previous quarter**
 - The number of applications for NASS support in Q3 2007 was 4,145 (excluding dependents) **+9.08%** higher than Q2 (3,800) which in turn was **-16.94%** lower than Q1 2007 (4,575) and 5.26% lower than Q3 2006 (4,375).
 - In Q3 2007, 3,300 (80%) applications were from single adults and 850 (20%) were from family groups.

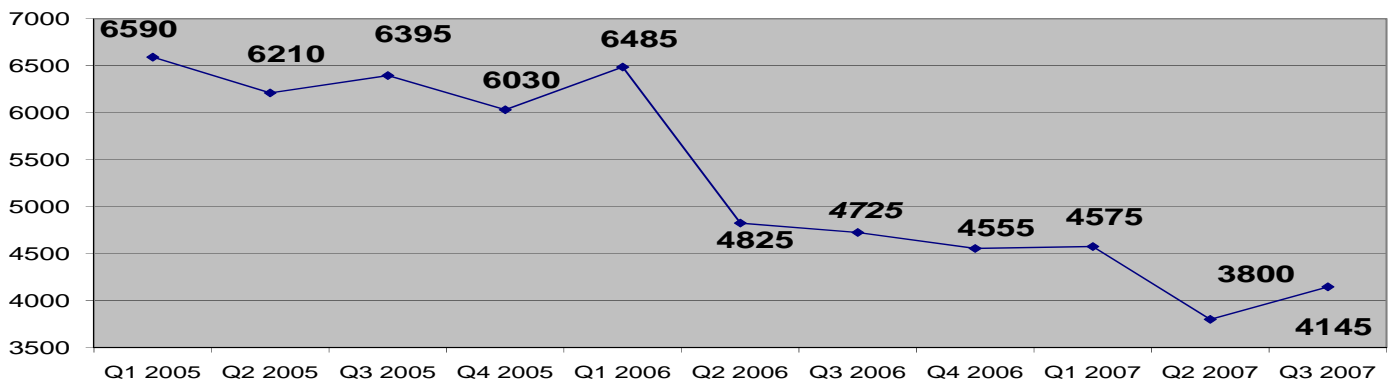


Figure 9

- **Support type:**
 - In Q3 2007, **2,835** (68%) applications were for accommodation and subsistence support this is an increase of **12.28%** on Q2 (2,525) and **850** (21%) of applications were for subsistence only support a decrease **13.71%** on Q2 (985).
 - The remaining 11% of applications were classified as invalid or unknown.

Top Ten Nationalities applying for NASS support:

In the last quarter applications fell from four of the top ten nationalities and rose from the remaining 6.

Applications from **Iran** rose by 13%, **Iraq** by 28%, **Eritrea** by 48%, **Zimbabwe** 7%, **Sri Lanka** by 19% and the **“Peoples Republic of China”** by 15%. Applications from **Somalia** fell by 6%, **Afghanistan** by 21%, **Pakistan** by 6% and **“Sudan”** by 4%,

Figure 10

Islamic Republic of Iran	525
Republic of Iraq	465
Eritrea	425
Somalia	360
Zimbabwe	345
Afghanistan	285
Sri Lanka	195
Pakistan	155
Peoples Republic of China	125
Sudan	85
Others	1,180
Total	4,145

* Figures from Home Office: Asylum Statistics: 3rd Quarter 2007 United Kingdom (p7)

Asylum application initial decisions – National⁷

Number of decisions made for the past 7 quarters

• Initial Decisions in Q3 2007: 5,230; 11.88% lower than previous quarter

- 5,230 initial decisions were made in Q3 2007, **-11.88%** lower than in Q2 2007 (5,935) and lower than the level of applications.
- The number of cases (excluding dependants) awaiting an initial decision was 4,800 at the end of September 2007 (4,500 at the end of June 2007, 4,900 at the end of March 2007, at the end of September 2006 it was 6,000).
- 17% of initial decisions in Q 2007 were to grant asylum compared with 14% for Q2 2007. 12% of initial decisions granted humanitarian protection or discretionary in Q3 compared with 10% for Q2. 71% of initial decisions in Q3 2007 were refusals, compared to 76% for Q2.

The Chart below demonstrates the number of decisions made for the past 7 quarters⁸:

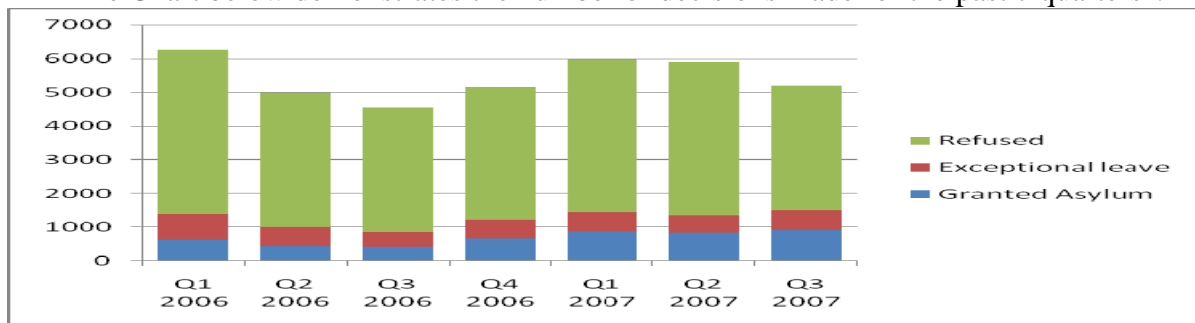


Figure 11

	Q1 2006	Q2 2006	Q3 2006	Q4 2006	Q1 2007	Q2 2007	Q3 2007
Granted Asylum	626	448	415	670	885	840	915
Exceptional leave	751	548	445	550	565	520	595
Refused	4,883	3,984	3,695	3,930	4,525	4,535	3,685

Number of decisions made for the past 11 quarters

The Chart below shows the number of Initial decisions made for the period from Q1 of 2005 to Q3 of 2007:

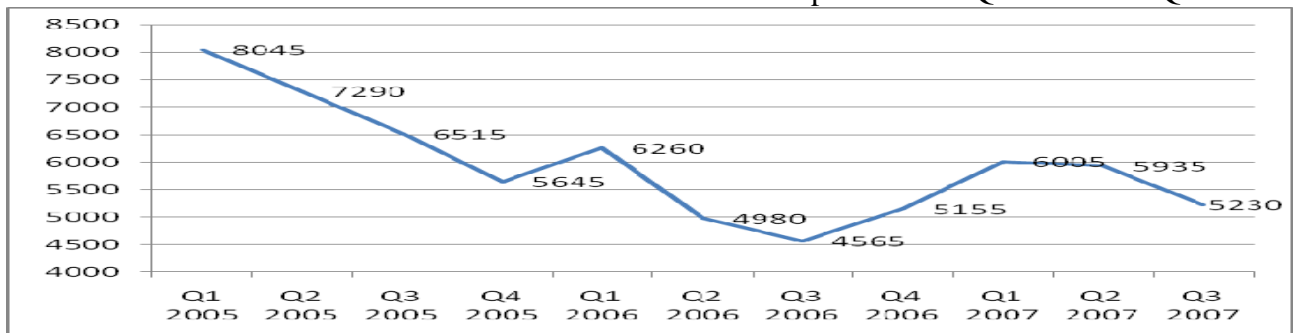


Figure 12

Timeliness of Initial Decisions

- 43% of applications received in Q3 had initial decisions reached and served within two months⁹, compared with 56% in Q2 and 59% in Q3 2006¹⁰.

⁷ All figures on this page come from p3 and Table 1 Asylum Statistics: 3rd Quarter 2007 United Kingdom except for the Timelines of Initial Decisions.

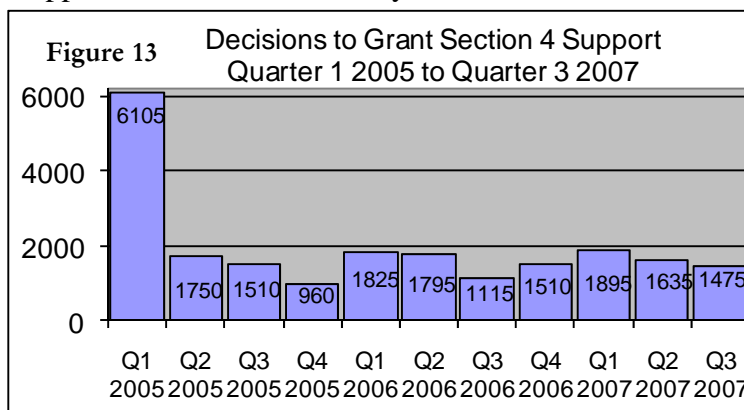
⁸ Due to home office rounding this totals 5895 not 5935.

⁹ "Two Months" is defined as 61 days.

¹⁰ Home Office: Asylum Statistics: 4th Quarter 2007 United Kingdom -<http://www.homeoffice.gov.uk/rds/pdfs08/asylumq407.pdf>

Support under section 4 ('Hard Case') of the Immigration and Asylum Act 1999 is provided in the form of accommodation and food, and other basic essential items. Individuals are generally eligible for section 4 support if their asylum application has been finally determined as refused, but they are destitute and there are reasons that temporarily prevent them from leaving the United Kingdom. These reasons are:

- Taking reasonable steps to leave the UK or place themselves in a position in which they can leave the UK; or
 - unable to leave UK by reason of a physical impediment to travel or some medical reason; or
 - unable to leave UK because there is no current viable route of return to the country of origin; or
 - taking reasonable steps to leave the UK or place themselves in a position in which they can leave the UK; or
 - permission has been obtained to proceed with a judicial review against a decision relating to the person's asylum claim; or the provision of support is otherwise necessary to avoid a breach of the person's human rights.
- The number of successful applications for section 4 support in Q3 2007 was (1,475) **-9.79%** lower than in Q2 2007 (1,635).
 - Nationals of Iraq accounted for the highest number of failed asylum seekers in receipt of section 4 support, 3225 (34% of those supported). This is a trend that began in quarter 3 2006.
 - As at the end of Q3 (end of September 2007) 9,500 excluding dependants, were in receipt of section 4('Hard Case') support, 1.44% higher than at the end of Q2 (June) (9,365).



Nationality	Number Supported
Iraq	3,225
Iran	965
Eritrea	835
Sudan	595
Zimbabwe	475
Somalia	470
Dem. Rep Congo	455
Peoples Republic of China	295
Ethiopia	290
Congo - Brazzaville	250
Others	1,645
Total	9,500

Figure 14

* Figures on this page from Home Office: Asylum Statistics: 3rd Quarter 2007 United Kingdom (p9)

Asylum appeals - National

On 4 April 2005, the commencement of section 26 of *The Asylum and Immigration (Treatment of Claimants, etc.) Act 2004* introduced the appeals system under the Asylum and Immigration Tribunal (AIT). All outstanding work from the Immigration Appellate Authority has been transferred to an equivalent appeal stage within the AIT, in line with transitional provisions. Data on determinations refer to cases dealt with by Immigration Judges. All appeals figures are provisional and subject to change.

Appeals received

- ◆ Appeals received by AIT in Q3: 3,720, this is **-2.87%** lower than previous quarter (3,830)

Appeals determined

- Appeals determined increased in Q3 by 2% to 4,095 from 4,005 in Q2, and was 22% higher than in Q3 2006 (3,355).
- The proportion of appeals dismissed was 73% in Q3 in Q2 this figure was 71%, whilst 23% of appeals allowed, the same as Q2.
- The total asylum work in progress at the AIT at the end of Q3 (September) 2007 was 5,000; this is the same figure as in Q2.

Appeals determined by Immigration (IAA/AIT)

The Chart below shows the number of appeals determined by the Asylum and Immigration Tribunal (AIT), formerly called Immigration Appellate Authority (IAA) Adjudicators

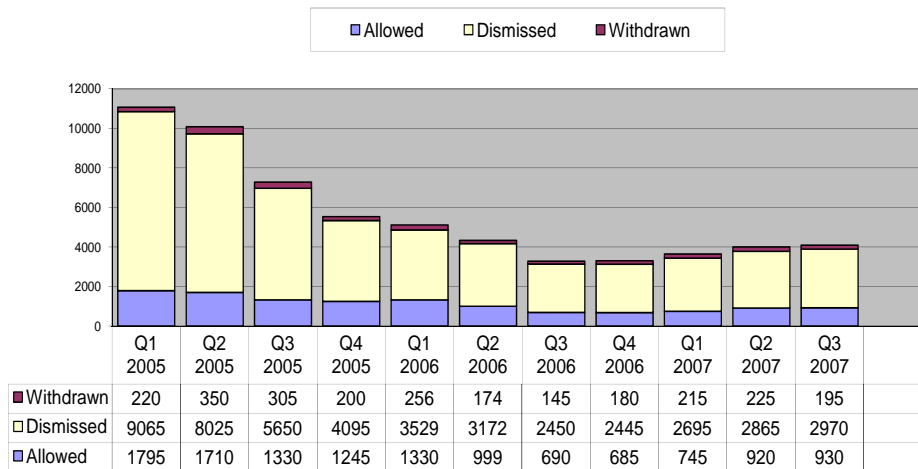


Figure 15

- Figures on this page from Home Office: Asylum Statistics: 3rd Quarter 2007 United Kingdom (p4) and from Table 5

Applications received for asylum in Europe and elsewhere, including dependants, for 2003, 2004, 2005, 2006 Q1 Q2 and Q3 of 2007.

Figure 16

Country	2003	2004	2005	2006	2007 Q1	2007 Q2	2007 Q3
Austria	32,400	24,700	22,500	13,400	3,100	2,700	2,900
Belgium	19,300	17,500	18,200	13,200	3,200	3,100	2,900
Denmark	4,600	3,200	2,300	1,900	600	400	700
Finland	3,200	3,900	3,600	2,300	300	300	400
France	62,000	65,600	59,200	30,700	7,300	6,700	6,600
Germany	50,600	35,600	28,900	21,000	4,400	3,800	5,200
Greece	8,200	4,500	9,100	12,300	7,400	7,100	5,500
Ireland	7,900	4,800	4,300	4,300	1,100	900	1,000 (e)
Italy	13,500	9,700	9,500	10,300	n/a	n/a	n/a
Luxembourg	1,500	1,600	800	500	100	100	100
Netherlands	13,400	9,800	12,300	14,500	1,700	1,400	1,800
Portugal	100	100	100	100	100	100	*
Spain	5,900	5,600	5,000	5,300	2,300	1,900	1,400
Sweden	31,400	23,200	17,500	24,300	9,200	8,400	9,400
United Kingdom	60,000	40,600	30,800	28,300	6,800	5,900	7,100
Total EU15	313,900	250,300	224,200	182,400	47,600	42,800	45,100
Cyprus	4,400	9,900	7,700	4,500	1,700	1,600	1,400
Czech Republic	11,400	5,500	4,200	3,000	500	400	500
Estonia	*	*	*	*	*	*	*(e)
Hungary	2,400	1,600	1,600	2100	500	700	800
Latvia	*	*	*	*	*	*	*
Lithuania	200	200	100	100	*	*	*
Malta	600	1,000	1,200	1,300	300	100	400(e)
Poland	6,900	8,100	6,900	4,400	700	700	1,500
Slovakia	10,400	11,400	3,500	2,900	700	800	800
Slovenia	1,100	1,300	1,800	500	100	100	100(e)
Total EU25	351,300	289,100	251,300	201,400	51,900	47,300	50,600
Bulgaria	1,500	1,100	800	600	200	200	200
Rumania	1,100	700	600	500	100	100	300
Total EU27	353,900	290,900	252,700	202,500	52,200	47,600	51,100
Other Europe							
Norway	15,600	7,900	5,400	5,300	1,200	1,200	1,800(e)
Switzerland	21,000	14,200	10,100	10,500	3,000	2,400	2,300
Total Europe	390,600	313,100	268,200	218,300	56,500	51,200	55,100
Non-Europe							
Australia	4,300	3,300	3,200	3,500	900	1,000	1,000
Canada	31,900	25,500	19,700	22,900	5,900	5,500	7,500
USA	80,200	63,000	48,900	50,800	13,500	13,500	10,800
Grand Total	506,900	400,700	340,100	295,600	76,700	71,200	74,400

Figures rounded to the nearest 100 with * = between 1 and 49.

• Figures on this page from Home Office: Asylum Statistics: 3rd Quarter 2007 United Kingdom (table 23)

** Taken from the data available, however some countries still to submit additional data.

Acknowledgements

Home Office: Asylum Statistics: 3rd Quarter 2007 United Kingdom -
<http://www.homeoffice.gov.uk/rds/pdfs07/asylumq307.pdf>

Home Office: Asylum Statistics: 4th Quarter 2007 United Kingdom -
<http://www.homeoffice.gov.uk/rds/pdfs07/asylumq407.pdf>

NESPARS (Formerly NECARS) internal data on North East dispersals supplied to NERS. The actual date the database was run to generate the figures was 01/10/2007.